

# MINNESOTA AREA EMERGENCY COMMUNICATIONS PLAN



**DEPARTMENT OF THE NAVY  
DIRECTOR, CENTRAL AREA  
NAVY-MARINE CORPS MARS  
615 PREBLE AVENUE  
GREAT LAKES, ILLINOIS 60088-5705**

**UNCLASSIFIED**

**Original Date of Issue/Effective 3 June 2000**

**Last Reviewed/ Revised 6 February 2008**

**Supersedes (all prior)**

**NNNOGAZ/XEE**

**References:**

- A. NTP 8(D) (draft) and/or its subsequent successor.**
- B. NTP 8(D) (draft) Annex D and/or its subsequent successor.**
- C. NAVMARCORMARS Central Area Operations Guide, Annex C and/or its subsequent successor.**
- D. Chief, MARS, Broadcasts**
- F. Director, Central Area, Broadcasts**
- G. Director, Region FIVE, Broadcasts**
- H. MINNESOTA Area Broadcasts**

**Distribution:**

**NNNOASA VA  
NNNOASZ GA  
NNNOASG IL  
NNNOASG TWO AL  
NNNOAS5 MN  
NNNOAS5 TWO MI  
NNNOALL MN**

**NAVMARCORMARS CENTRAL AREA  
REGION FIVE  
MINNESOTA AREA  
EMERGENCY COMMUNICATIONS PLAN  
Revision Index**

<b>Review/Revision Date</b>	<b>Pages/Sections</b>	<b>Revision Number</b>	<b>Revision</b>
09 May 1999	All	1	Update Minnesota Emergency Communications Plan
05 June 1999	All	2	Update & Restructure MN ECOM Plan
15 January 2000	All	3	Update reference to NNN0ASG TWO from IL to MI
01 March 2000	All	4	Correct errors
13 March 2000	Annex I	5	Update Minnesota Department of Emergency Management information
25 April 2000	Annex A	6	Altered/Update Call up tree
01 May 2000	All	7	Correct errors introduced due to scanning
14 May 2000	All	8	Revisions to renumber pages
24 May 2000	All	9	Revisions recommended by NNN0GAZ TWO
	All		Correct Annex references in document
	Annex K		Insert station capabilities for Active stations
25 May 2000	All	10	Revisions recommended by NNN0ASG TWO
	Annex F		Correct EEI identifiers, include EEI e-mail procedure
27 May 2000	All	11	Revisions recommended by NNN0GAZ FOUR
	16-19		Definition of ART/SAT team captain. Modify all corresponding references to ART/SAT captain.
	Annex K		Update station capabilities for Active stations
	Annex A		Revise Callup Tree
28 May 2000	All	12	Revisions recommended by NNN0ASZ GA
	Annex E		Correct EEI message format
29 June 2000	Annex A	13	Remove references to silent key station
	Annex B		Remove references to silent key station
	Annex K		Remove references to silent key station
01 July 2003	All	14	All changes to revision 13 prior to 01 Jul 2003 are included in this revision
	All pages		Change all references to Region Four to Region Five, make necessary changes to indicate Central Area
	pg 11-12		Update Ecom Implementation Message Addees
	Annex B		Change membership in SAT team for Metro area
	Annex C		Revise Annex C IAW AS5 MI 182300Z JUN 03
	Annex E		Update all Addees in EEI, Implementation, SITREP and Termination worksheets to reflect reorganization
	Annex F		Update email submission of EEI messages IAW CHNAVMARCORMARS BCST 14-03 241100Z JUN 03
	Annex I, J, K, L		Insert new Annex I for FEMA MERS stations callsigns. Reassign current Annex I to J, Annex J to K, and Annex K to L respectively

**NAVMARCORMARS CENTRAL AREA  
REGION FIVE  
MINNESOTA AREA  
EMERGENCY COMMUNICATIONS PLAN  
Change Log**

<b>Date</b>	<b>Pages/Section</b>	<b>Change number</b>	<b>Change</b>
01 July 2003		0	Original issue
12 July 2003	Annex G pg 1	1	Change Region Five AA4RE MBO callsigns IAW Region 5 Bcst 16/03
08 Nov 2003	Annex E pgs 2,3	2	Change EEI Subj line IAW CHNAVMARCORMARS BCST 17-03 061800Z Nov 03
	Annex L		Update member equipment listing
	Annex A pgs 1, 3		Update NECOS/TREP schedule, update callup tree
01 Feb 2004	Annex A pg 3-4	3	Update Contact numbers
	Annex B pg 1		Update SAT team addresses
	Annex E pgs 4, 5, 8, 9		Update message routing to reflect new multi file used in MDS
	Annex L		Update member equipment listing
	All		Update NNN0ASG TWO to NNN0ASG TWO IL until new area director selects staff
19 Mar 2005	All	4	Update NNN0ASG TWO IL to NNN0ASG TWO AL
	All		Update NNN0AS5 TWO WI to NNN0AS5 TWO until new Region Five staff member is selected
	Annex L		Remove equipment listing of terminated members
	pg 7		Update Area Incident Command Assignments to agree with MN State staff
	Annex A pgs 3, 4		Update calling tree to reflect MN State staff assignments and revised membership roster
25 Mar 2005	Annex A pgs 3, 4	5	Update calling tree to reflect Region Five staff changes
	Annex E all pages		Update addees to reflect Region Five staff changes
	pg 10		Update addees to reflect Region Five staff changes
03 Apr 2005	Pgs 9-13	6	Removed implementation and termination message formats from the text and referenced appropriate annex – E and pages for message formats.
	Annex E Pgs 2-3 EEI		Fixed callsign information in headers, provided additional information in paragraph G for clarification
	Annex E pgs 4-5, 8-9		Provided information about alerting neighboring states
08 Apr 2005	Annex E pgs 6-7	7	Remove NNN0ASG TWO AL as info addee in Actual and Exercise SITREP message header per R 071450Z APR 05 FM NNN0ASG TWO AL Paragraph 2. Change NNN0AS
04 Jul 2005	Annex F pg 2	8	Update EEI email address IAW CHFNAVMARCORPSMARS BCST 05-05
	All		Page numbers and date added to all pages in all sections. Page numbering by section.
24 Dec 2005	Annex H pg 1	9	Correct secondary frequency for the 5G1B net, per Region Five Operations Guide
			Correct tertiary frequency for the 5G1B net, per Region Five Operations Guide





**NAVMARCORMARS CENTRAL AREA  
 REGION FIVE  
 MINNESOTA AREA  
 EMERGENCY COMMUNICATIONS PLAN  
 TABLE OF CONTENTS**

<i>Cover Page</i> .....	<i>i</i>
<i>Revision</i> .....	<i>ii</i>
<i>Change log</i> .....	<i>iii</i>
<i>Table of Contents</i> .....	<i>vi</i>
<i>Table of Contents - Annex Distribution</i> .....	<i>vii</i>
<b>1. Introduction</b> .....	<b>1</b>
<b>A. NAVMARCORMARS Mission</b> .....	<b>2</b>
<b>B. Supporting Civilian Authorities</b> .....	<b>2</b>
<b>2. Preparedness</b> .....	<b>3-5</b>
<b>Recommended Emergency Preparation Activities</b> .....	<b>3</b>
<b>Sample Listing of Home Station inventory Considerations</b> .....	<b>4</b>
<b>Sample Listing Portable/Mobile Station Inventory Considerations</b> .....	<b>5</b>
<b>3 Response</b> .....	<b>6-15</b>
<b>A. Phased alerting</b> .....	<b>6</b>
<b>B. ECOM Net Procedures</b> .....	<b>6-15</b>
<b>Chain of Command – ECOM</b> .....	<b>7-8</b>
<b>NECOS Designation</b> .....	<b>9</b>
<b>Implementing an ECOM Net</b> .....	<b>9-12</b>
<b>NECOS Responsibilities</b> .....	<b>12-13</b>
<b>Responsibilities of MARS Members</b> .....	<b>13-14</b>
<b>C. Terminating ECOM Operations</b> .....	<b>14-15</b>
<b>4. Special Operations</b> .....	<b>16-19</b>
<b>A. Station Augmentation Teams (SAT)</b> .....	<b>16-18</b>
<b>B. Auxiliary Radio Teams (ART)</b> .....	<b>17-19</b>
<b>C. NCS/NSEP S.H.A.R.E.S.</b> .....	<b>19</b>

**NAVMARCORMARS CENTRAL AREA  
REGION FIVE  
MINNESOTA AREA  
EMERGENCY COMMUNICATIONS PLAN  
TABLE OF CONTENTS**

**Annex Distribution**

Discretion regarding some of the operational logistics is necessary in order to assure some reasonable precautions are installed to respect the privacy of the membership as well as to ultimately protect the mission of NAVMARCORMARS. Some of these Annexes as noted below contain sensitive, private and/or unlisted information that perhaps should not be openly disclosed to the general public (i.e., should not be readily available via a web site, etc.). These Annexes are labeled as "Restricted Distribution". Should these annexes be omitted from your file, they can be obtained via the MARS hierarchy

<b>ANNEX</b>	<b>Number of Pages</b>
<b>A. Minnesota Member Call up (Restricted distribution)</b>	<b>3</b>
<b>B. Minnesota Station Augmentation Team (SAT Operations)</b>	<b>1</b>
<b>C. Minnesota Auxiliary Radio Team (ART Operations)</b>	<b>1</b>
<b>D. Minnesota ECOM Training</b>	<b>1</b>
<b>E. ECOM Work Sheets</b>	<b>11</b>
<b>F. EEI Event Identifiers</b>	<b>2</b>
<b>G. Region Five RDN Listing (Restricted Distribution)</b>	<b>1</b>
<b>H. Voice Frequency Assignments (Restricted Distribution)</b>	<b>2</b>
<b>I. FEMA Mobile Emergency Response Support (MERS)</b>	
<b>Detachment Stations Call signs</b>	<b>2</b>
<b>J. Emergency Management (Restricted Distribution)</b>	<b>5</b>
<b>K. ECOM Availability Form Letter</b>	<b>3</b>
<b>L. Station Capability Report Summation (Restricted Distribution)</b>	<b>8</b>

**NAVMARCORMARS CENTRAL AREA  
REGION FIVE  
MINNESOTA AREA  
EMERGENCY COMMUNICATIONS PLAN**

**1. Introduction**

**1-101** This Minnesota Area Emergency Communications Plan was specifically restructured and designed to be a user-friendly and functional document for the Minnesota NAVMARCORMARS membership. As such, this composition was made without the abundant use of reference and cross-referenced governing documents for revision management considerations. As long as the applicable content of the governing documents (cover page, et al) does not significantly change OR contradict this document, revision of this Minnesota ECOM Plan may not be required for the sake of a mere cross reference correction.

Accordingly, the Minnesota Area MARS hierarchy has the responsibility to ensure that the content within this ECOM Plan is in compliance to applicable governing materials. Subsequent references to National, Area, Regional, State or other instructive sources may therefore be minimal.

**1-102** This Plan is intended to provide State members with specific guidance on planning, preparation, response, operation, training and reporting concerning the delivery of emergency communications support. This ECOM Plan will describe the appropriate action that might be taken by Minnesota members as a result of various Communication Conditions (COMCON). This Plan DOES NOT claim to cover every possible situation, or necessarily choose the only appropriate action, but, rather provides examples and guidelines to follow. As in all Navy-Marine Corps MARS operations, net discipline and good operating judgment are essential to the successful completion of our mission.

**1-103** In Accordance with CHNAVMARCORMARS BCST 15-02 frequencies noted in the plan are **not** to be broadcast in their numerical form on the air or in broadcasts. Instead, when broadcasting frequency information **use only the three letter designators** from the Frequency Matrix list. In this manual, when a frequency is listed, the three-letter designator will be provided in the text and the frequency (not to be broadcast) will be in parenthesis. All members are encouraged to obtain a copy of the frequency matrix chart. Should a member require assistance in obtaining a copy of the frequency matrix, please contact NNN0GAZ.

**1-104** Any questions, suggestions, or comments regarding this plan should be sent to NNN0GAZ, NNN0GAZ ONE or NNN0GAZ TWO.

**NAVMARCORMARS CENTRAL AREA  
REGION FIVE  
MINNESOTA AREA  
EMERGENCY COMMUNICATIONS PLAN**

**A. NAVMARCORMARS Mission, Functions, and Fundamentals.**

**1A101** The mission of MARS is to provide Department of the Navy sponsored emergency communications ("ECOM") on a local, national, and international basis as an adjunct to normal Naval Communications.

**1A102** The two primary functions of NAVMARCORMARS are to: provide auxiliary communications to military and/or civil disaster officials during periods of emergency; and, to assist in effecting normal Naval communications under emergency conditions. Emergencies are divided into three basic types: civil riot or uprising, natural disaster, and hostile action.

**1A103** When MARS resources are employed to support ECOM, they shall be prioritized in compliance to the directives of the MARS hierarchy (NTP8 Annex D, Central Region ECOM Plan, Region Five ECOM Plan, etc.).

**1A104** The three fundamental requirements of MARS communications are Reliability, Security and Speed. Reliability is always paramount. Thus, rapid communications are subject to inherent concerns of reliability and security.

**B. Supporting Civilian Authorities**

**1B101** It shall be the policy that MARS communications resources may be employed to support civil defense (emergency management) and civil disaster requirements, so long as they are not required to support emergency communications requirements of the Department of the Navy, subject to the following:

**1B102** MARS resources should be requested by civil and/or disaster control officials; MARS assistance will complement but not substitute for other ECOM resources; MARS support shall be provided only until such time as it is no longer required or until normal communications are restored and; MARS resources made available to civil and/or disaster control officials are subject to no authority other than that of their superiors in the military chain of command.

**1B103** Relative to civilian support, it is obvious that in order for your station to be of any use to a civilian authority (i.e., **for them to notify you** that MARS assistance is necessary), they must be aware that your MARS station exists. Annex J exhibits a sample form letter approved by NNNOASG that may be utilized specifically for this purpose.

**NAVMARCORMARS CENTRAL AREA  
REGION FIVE  
MINNESOTA AREA  
EMERGENCY COMMUNICATIONS PLAN**

**2. Preparedness**

**2-101** Being prepared is more than just a state-of-mind. The need for specific emergency communication requirements cannot be predicted for any one situation. Preparedness includes, but is not limited to, proper maintenance of station equipment to insure operational readiness, participation on State, Region and/or Area HF nets, preparing and filing current Individual Station Capabilities Reports with the State Director, participating in drills and exercises as opportunities present themselves and effective planning. To Further enhance our preparedness, all stations are encouraged to monitor the primary 5G1B frequency whenever practicable.

**2-102 Recommended Emergency Preparation Activities**

1. Verify station equipment capabilities by regular participation in scheduled traffic nets and planned exercises. In addition, establish a preventative maintenance ("PM") program for all of your radio and related equipment by setting up a routine test and evaluation schedule.
2. At a minimum, check antenna systems and exterior station equipment at the beginning of each season (four times a year) to ensure dependability. Also verify their integrity after any storms.
3. Maintain a small stock of spare parts (i.e., tubes, fuses, etc) as deemed necessary.
4. Make provisions for obtaining emergency power capabilities- Deep Cycle Batteries; test and operate generators once per quarter (start of each season) or as specified by the manufacturer and/or your PM Schedule.
5. Familiarize yourself with the contents of NTP-8, Region Five Operations Guide, and this document.
6. List agencies and important telephone numbers and keep them with this ECOM Plan.
7. Monitor primary frequencies used in the Minnesota Area.
8. During a natural emergency, loss of your antenna is a high probability. Your plan should include a spare wire antenna and instructions on how to perform an emergency installation.

**2-103** Remember that in an actual emergency, each member should see to their own safety and that of their family first. An operator who is injured and/or worried, cannot function as effectively as they otherwise could. The first step in planning for MARS is planning and preparing for your family's safety. To this end, each station is encouraged to set goals for themselves in maintaining and improving their readiness capabilities. The following sample list of equipment items may be used in SAT, ART and/or individual station planning. It is not necessarily a complete list, but it does represent a reference point for consideration. Acquire, add, subtract or adjust items that may apply to your anticipated needs.

**NAVMARCORMARS CENTRAL AREA  
REGION FIVE  
MINNESOTA AREA  
EMERGENCY COMMUNICATIONS PLAN**

**2. Preparedness - continued;**

**2-104 Sample Listing of Home Station inventory Considerations**

HF Transceiver	Tape Recorder
HF General Coverage Receiver	Accurate Clock (Battery Backup)
HF/VHF Equipment	Maps/Charts
VHF HT, Charger and Batteries	Paper and Pencils
HF/VHF Digital Components	MARSGRAMS, Paper, Pencils, Etc.
ARL Numbered Radiogram	Telephone Lists
Spare Microphone(s)	MARS NMAT List
Headset(s)/Earphone(s)	Flashlight and Extra Batteries
Soldering Iron	SWR Bridge
Fire Extinguisher	Volt-Ohm Meter
First Aid and Sewing Kits	Emergency Power Supply & Fuel (Family)
Tools (Electrical and Mechanical)	Spare Antenna(s)
Spare Coax and Wire	Axe, Hatchet and/or Shovel
Extra Connectors (RF and AC)	Electrical and Duct Tape, Solder, etc.
TV monitor	Drinking Water/Purification Tablets,
Broadcast Radio (Battery Powered)	Survival Food, Blankets & Bathroom Tissue
Work Clothes	Emergency Cash
Current NTP-8	Minnesota Area ECOM Plan
Region Five Operations Guide	Weather radio
Emergency Generator	Deep Cycle Battery(ies)

**AND *any other* appropriate precautions to protect family and property.**

**NAVMARCORMARS CENTRAL AREA  
REGION FIVE  
MINNESOTA AREA  
EMERGENCY COMMUNICATIONS PLAN**

**2. Preparedness - continued;**

**2-105 Sample Listing Portable/Mobile Station Inventory Considerations**

HF Mobile Transceiver	Extra Connectors (RF and AC/DC)	
VHF Mobile Transceiver	Portable HF/VHF Digital Components - laptop computer, TNC	
Portable TV- (Battery Powered)	Broadcast Radio (Battery powered)	
- Extra batteries	- Extra batteries	
VHF HT	Volt-Ohm Meter	
- Batteries,	Tape Recorder (Battery Powered)	
- Antennas and/or Mobile Mag-Mounts	- Extra batteries	
Spare Microphone(s)	Watt Meter	
Portable Soldering Iron	Portable Power Generator and Fuel	
SWR Bridge	MARSGRAMS, Paper, Pencils, Etc.	
Accurate Clock (Battery Powered)	ARL Numbered List	
Field Antenna(s)	MARS NMAT List	
Coax and Wire	NTP-8	
Maps of Area	Fire Extinguisher	Minnesota Area ECOM Plan
Region Operations Guide	Tool Kit	Blankets & Bathroom Tissue
First Aid Kit (Travel)	- Electrical and mechanical	
Jumper Cables	Siphon Hose	Flashlight & Batteries
Hammer, Axe and Hatchet	Shovel	Sharp Pocket utility Knife
Nylon Ropes	Drinking Water and/or	
Food/Snacks	Water Purification tablets	
Work Clothes	Binoculars	Maps/Charts and Compass
Gloves (Cold Weather and/or Work)	Identification/Name Tag	Shelter (Tent, etc)
Boots	Coat	Reflective Vest
Sun-Glasses	Rain Gear	Hats
Bug Spray	Sun Screen	Flares/Reflector
Toiletries, etc	Reading Glasses	Can Opener (P38, etc)
Blankets	Soap	Wash Cloths/Towels
Small Containers	Credit Cards (personal)	Backpack/Duffel Bag
Water	Zip-Lock Bags	Food and Fire Starting Kit(s)
Cash (Small Bills and Coins)	Medications	First Aid and Sewing Kits
Wrist Watch	Deep Cycle Battery(ies)	

**AND *any other*** appropriate precautions to protect self and/or property.

**NAVMARCORMARS CENTRAL AREA  
REGION FIVE  
MINNESOTA AREA  
EMERGENCY COMMUNICATIONS PLAN**

**3. RESPONSE**

**A. Phased Alerting**

**3A101** In order to provide a phased response to emergency situations, the following alerting conditions and actions required will apply:

<u>Alert Condition</u>	<u>Action Required</u>
<b>COMMCON III</b>	Emergency or disaster expected within <b>48 HOURS</b> . Alert Area MARS stations to <b>monitor primary</b> Frequencies. Locate supplies. Test emergency power.
<b>COMMCON II</b>	Emergency or disaster expected within <b>24 HOURS</b> . Effect all measures to activate on short notice. Curtail routine for readiness.
<b>COMMCON I</b>	Emergency or disaster <b>IS IMMINENT</b> . <b>Suspend</b> all normal ops. <b>Activate emergency nets &amp; Emergency Plan as necessary.</b> Take appropriate precautions.
<b>COMMCON ZERO</b>	Emergency or disaster <b>EXISTS</b> . Same as COMMCON I.

**3A102** The alerts noted above may also be communicated via the MARS Hierarchy. As propagation warrants, NNNOGAZ TWO shall guard designated frequencies specified in Annex H or any frequency he/she is directed by higher authority to guard.

**B. ECOM Net Procedures**

**1. GENERAL INFORMATION**

**3B101** All Minnesota Area Emergency Communications and reports shall be in accordance with the initially referenced materials specified upon this ECOM Plan's cover page.

**3B102** The submission of an Immediate Precedence EEI (Essential Elements of Information) does not in itself implement the ECOM portions of this Plan. An Implementation Message must be executed in order for an ECOM scenario to be recognized.

**3B103** Drills and Exercises are NOT treated any differently than an actual emergency with the exceptions that a) considerations for further skill development (training) may be weighed differently when life and/or property are in jeopardy and b) the Call-up Tree is not generally used for exercises unless a test of its execution has been deemed necessary.

**3B104** In executing this plan, unless otherwise directed, an Area Command Net shall be established on the frequency assigned to the 5G1B Net, the secondary frequency shall be the secondary frequency of the 5G1B Net. (See also Frequency Assignments - Annex H.)

**NAVMARCORMARS CENTRAL AREA  
REGION FIVE  
MINNESOTA AREA  
EMERGENCY COMMUNICATIONS PLAN**

- 3. Response - continued;**
- B. ECOM Net Procedures - continued;**
- 2. Chain of Command -continued;**

**3B205 Command Duty Officer (CDO) Assignments:**

In the absence of NNNOGAZ, NNNOGAZ ONE and/or NNNOGAZ TWO, a Command Duty Officer (CDO) (or designee) may be appointed by NNNOGAZ, NNNOGAZ ONE or in his/her/their absence(s), NNNOASG (or his/her designate). The responsibilities of the CDO shall remain in effect as long as the CDO shall be on duty. For purposes of this ECOM Plan, an "ECOM Staff Officer" shall be "on duty" at all times unless or until relieved, whether that member is NNNOGAZ, NNNOGAZ ONE, NNNOGAZ TWO, or a CDO. Primary Candidates for CDO are the assigned "Incident Command Officers." However, any qualified member may be appointed as circumstances warrant. All ECOM Staff Officers, Incident Command Officers and appointed CDO's should have issued to their station, a MINNESOTA Area Station Capability Summation Report. See Appendix K.

**3B206 Navy-Marine Corps MARS Communications Command Assignments**

To effect a coordinated response when an ECOM implementation message has been executed, the National Incident Management System (NIMS) is adopted. For the purpose of Navy-Marine Corps MARS communications, this means that a designated person shall be in charge of Navy-Marine Corps MARS communications for the incident until the resources are no longer needed and/or relieved by authority. The following members and Staff Officers are tentatively assigned as Incident Command Officers to the following zones:

**Northern Region**

**- includes Minnesota DEM areas North East and North West  
NNN0KZC (GAZ ONE, GAZ TWO)**

**Central Region**

**- includes Minnesota DEM areas West Central and Metro  
NNN0XYA (GAZ THREE)**

**Southern Region**

**- includes Minnesota DEM areas South East and South West  
NNN0XEE (GAZ)**

**NAVMARCORMARS CENTRAL AREA  
REGION FIVE  
MINNESOTA AREA  
EMERGENCY COMMUNICATIONS PLAN**

- 3. Response - continued;**  
**B. ECOM Net Procedures - continued;**  
**2. Chain of Command -continued;**

**3B207 Minnesota Area Zone Designation** In an effort to delegate geographical zones within the Minnesota Area, the following zones are so designated:

**NOTE:** so as not to confuse Minnesota DEM regions with FEMA regions, the designators MN-# have been added by the Minnesota Area Navy-Marine Corps MARS staff.

<u>South East Region MN-1</u>	<u>North East Region MN-2</u>	<u>North West Region MN-3</u>	<u>West Central Region MN-4</u>	<u>South West Region MN-5</u>	<u>Metro Region MN-6</u>
Blue Earth	Aitkin	Becker	Benton	Brown	Anoka
Dodge	Carlton	Beltrami	Big Stone	Chippewa	Carver
Faribault	Cass	Clay	Douglas	Cottonwood	Chisago
Fillmore	Cook	Clearwater	Grant	Jackson	Dakota
Freeborn	Crow Wing	Hubbard	Kandiyohi	Lac Qui Parle	Hennepin
Goodhue	Itasca	Lake of the Woods	Meeker	Lincoln	Isanti
Houston	Kanabec	Mahnomen	Mille Lacs	Lyon	Ramsey
Le Sueur	Koochiching	Marshall	Morrison	McLeod	Scott
Mower	Lake	Norman	Otter Tail	Martin	Sherburne
Nicolet	Pine	Pennington	Pope	Murray	Washington
Olmstead	St. Louis	Polk	Stearns	Nobles	
Rice		Red Lake	Stevens	Pipestone	
Steele		Roseau	Swift	Redwood	
Wabasha			Todd	Renville	
Waseca			Traverse	Rock	
Winona			Wadena	Sibley	
			Wilkin	Watonwan	
			Wright	Yellow	
				Medicine	

These zones follow the Minnesota Department of Emergency Management areas.

**NAVMARCORMARS CENTRAL AREA  
REGION FIVE  
MINNESOTA AREA  
EMERGENCY COMMUNICATIONS PLAN**

**3. Response - continued;**

**B. ECOM Net Procedures - continued;**

**3. NECOS DESIGNATION - MN ECOM**

**3B301** Except as noted, NECOS of the Minnesota Emergency Net has the full authority of, and is acting for, the Minnesota Area ECOM Staff Officer(s), or higher authority, until otherwise directed or relieved. See NECOS Responsibilities.

**3B302** If a net in process has been preempted with Emergency traffic (either actual or exercise), the NECOS of the original net shall (at least initially) be the NECOS of the subsequent ECOM Net.

**3B303** If a net is not in process, the station calling the ECOM Net shall (at least initially) be NECOS of the ECOM Net. (See also implementing an ECOM Net and NECOS Responsibilities.)

**3B304** The station first assuming Net Control (NECOS) shall remain as NECOS until relieved by specified authority.

**4. IMPLEMENTING AN ECOM Net**

**3B401** When a request for emergency communications is made by competent bonafide authority (i.e., FEMA, Office of the Governor, Minnesota Department of Emergency Management, Red Cross, County Disaster Officials, etc.) an ECOM Implementation Message shall be carefully composed by the station notified.

Gather ALL information required for the implementation message. **Care should be given to document the facts. Continue to monitor your source of information.**

The Emergency Communication Implementation message format for an ACTUAL emergency can be found in **Annex E, Page 4.**

As required by the situation, it is absolutely necessary that you also provide for your own safety and that of your family.

**3B402** For the purposes of drills, exercises, and further SKILL development/training per the directives issued, exercises shall be called at a frequency specified by the MARS hierarchy.

Gather ALL information required for the implementation message. Care should be given to document the exercise scenario. The documentation created should resemble that which would be required in an actual emergency including names and positions of simulated officials requesting support.

The Emergency Communication Implementation message format for an EXERCISE emergency communications drill can be found in **Annex E, Page 5.**

**NAVMARCORMARS CENTRAL AREA  
REGION FIVE  
MINNESOTA AREA  
EMERGENCY COMMUNICATIONS PLAN**

**3. Response - continued;**

**B. ECOM Net Procedures - continued;**

**4. IMPLEMENTING AN ECOM Net - continued;**

**3B403** Once the implementation message has been composed it must be communicated. Communication of an ECOM event is your FIRST PRIORITY. The implementation message initiates the ECOM. The station that originally receives the traffic, "Originating Station", must pass or relay it to an Action Addee. This message must be delivered. Alert NNNOGAZ, NNNOGAZ ONE, NNNOGAZ TWO and/or NNNOGAZ THREE via the most expedient means. Relay efforts to any absent addees must also be addressed.

**3B404** Once the IMPLEMENTATION message has been successfully transmitted, the Minnesota Area's ECOM Net is to be implemented. Depending on the nature and scope of the emergency or disaster, the Region and National ECOM plans may come into play, as well. In any event, an Area ECOM net will be established as directed by this plan by you or another MARS member. If the ECOM activation occurs during a traffic net, all stations, including those who were checked into the previous net will be instructed to check into the ECOM net. Operation of the traffic net will be SECURED.

**3B405** If a Net is NOT in process, the primary method to initiate an EMERGENCY ECOM Implementation is via the telephone. The Originating Station shall call NNNOGAZ, NNNOGAZ ONE, NNNOGAZ TWO or NNNOGAZ THREE. Once an ECOM Staff Officer has been notified, it will be their responsibility for the execution of the MINNESOTA Call-up Tree (see Annex A). If these stations are not available via telephone, the originating station is directed via this ECOM Plan to move to the designated emergency calling frequency(ies) specified in the Frequency Assignments - Annex G and get this message to NNNOASA ASAP. (Additional addees are NNNOASZ GA, NNNOASG IL, NNNOASG TWO IL, NNNOAS5 MI, NNNOAS5 TWO WI). **If radio contact can not be directly made, 'call in the blind'** for any station that may be monitoring. As a last resort, use the MARS Region Data system, the FAX machine or email but use whatever means are available to get the word out. Do not give up until you've accomplished your task.

**3B406 Procedure for "calling in the blind";**

If there is no net in progress, tune to one of the specified frequencies listed in Annex H and call:

**ANY STATION THIS FREQUENCY ANY STATION THIS FREQUENCY  
THIS IS NNNO (CALL SIGN) NNNO (CALL SIGN) WITH IMMEDIATE TRAFFIC. OVER**

**3B407** Note that, since you used the phrase ANY STATION THIS FREQUENCY twice, you give your call sign twice. With luck, a station will answer you and you can transmit your message to the responding station. If no one answers, try again on the same frequency, or, try a different frequency. Which frequency will work best depends on the time of day and the vagaries of HF radio propagation. The main thing to remember, here, is to get the message out as soon as possible.

**NAVMARCORMARS CENTRAL AREA  
REGION FIVE  
MINNESOTA AREA  
EMERGENCY COMMUNICATIONS PLAN**

**3. Response - continued;**

**B. ECOM Net Procedures - continued;**

**5. NECOS RESPONSIBILITIES OF AN ECOM NET**

**3B501 The NECOS will assign a Liaison Station** The exchange for assigning a liaison station is as follows:

**NECOS:** NNNOxxx, This is NNNOyyy. You are assigned as a liaison station. Be prepared to move to a different frequency. Remain on this frequency until otherwise directed. Over.

**Liaison Station:** This is NNNOxxx, Roger. Out.

**NOTE:** More than one liaison station may be assigned as circumstances warrant.

**3B502** The NECOS shall make every effort to **ensure that high precedence outbound traffic is being properly passed or relayed**. As such, he/she shall ensure that the implementation Message was sent. (Example; verify the Region Director has been made aware of the situation.) Once the implementation message has been passed and the rush has subsided, the net can be controlled as if it was a normal traffic net. The NECOS should have frequent net calls (request additional stations or stations with business for the net), direct the passing of traffic and maintain circuit discipline. Maintain firm control of the net.

**3B503** Insure that at minimal, initial Situation Reports (**SITREPS**) are sent and that the content of such are "in compliance to the requirements specified in Annex D."

**3B504** The NECOS shall also insure the **Minnesota Call-up Tree procedure** (actual Emergency unless otherwise directed) was activated to notify members of the emergency (see Annex A).

**3B505** Upon approval from an ECOM Staff Officer or higher authority, the **NECOS may activate an** Auxiliary Radio Team (ART) and/or Station Augmentation Team (SAT).

**3B506 The NECOS should make Frequent Net Call-ups** and shall occasionally verify propagation conditions by requesting Radio Checks.

**3B507** After the net is operating or as circumstances warrant (propagation, traffic delivery, etc.,) the **ALT NECOS may be directed to assume NECOS**. ALT NECOS would state as follows - All stations this emergency net (exercise XXX, etc), This is NNNOxxx, assuming net control. Out.

**3B508 The NECOS should not remain as Net Control for more than two (2) hours without relief.** At the end of the two hours, the ALT NECOS will assume the duties as NECOS and in turn will request/assign a new ALT NECOS and the chain will continue.

**3B509 The NECOS shall maintain proper circuit discipline and conduct DIRECTED net operations**, and conduct net operations until relieved by higher authority.

**NAVMARCORMARS CENTRAL AREA  
REGION FIVE  
MINNESOTA AREA  
EMERGENCY COMMUNICATIONS PLAN**

**3. Response - continued;**

**B. ECOM Net Procedures - continued;**

**5. NECOS RESPONSIBILITIES OF AN ECOM NET - continued;**

**3B510** The NECOS shall **use their Liaison station(s)** to pass traffic (SITREPS, etc.) to other designated nets/frequencies, etc..

Example: If an action Addee is not on board and the message can not be passed to another on board station that has a more efficient delivery capability, then direct the originating station to move to a specified calling frequency (See Frequency Assignments - Annex H) and get this message delivered.

**3B511 NECOS options** include authorizing abbreviated call signs; limit the number of check-ins; limit check-ins to those stations who have emergency traffic or business for the net only; acknowledge ARTs, stations at the disaster scene, or SAT's first and; use his/her best judgement by customizing this basic script in order to more efficiently or effectively as the needs of ECOM.

**3B512 The relieved NECOS**, unless otherwise directed by competent authority, at the completion of his/her watch, is responsible to make and transmit a Situation Report.

**6. RESPONSIBILITIES OF MARS MEMBERS DURING AN ECOM NET**

**3B601** Check into the ECOM Net during call-up.

**3B602** Do not transmit or tune without permission of the NECOS.

**3B603** Follow this ECOM Plan to the extent possible and instructions of the NECOS.

**3B604** Pass your SITREPS when directed and ensure that ALL of your reports are factual, concise, brief, and to the point, but not to the extent to be cryptic or incomprehensible.

**3B605** ECOM Traffic to and from a disaster area will consist of a mixture of formal (written) and informal command/administrative traffic (verbal). Due to anticipated high volume formal/informal traffic, the following guidelines shall be observed: Keep messages short and concise as possible. For ROUTINE precedence health and welfare traffic use NMAT, ARL, Z or Q abbreviated texts whenever possible. Traffic between disaster officials should be given PRIORITY or IMMEDIATE precedence. All health and welfare traffic should be given ROUTINE precedence. USE COMMON SENSE.

**3B606** Maintain a speaker watch on active circuits.

**3B607** Message accuracy is paramount, make sure you have good copy.

**3B608** Notify NECOS if you must secure.

**NAVMARCORMARS CENTRAL AREA  
REGION FIVE  
MINNESOTA AREA  
EMERGENCY COMMUNICATIONS PLAN**

**3. Response - continued;**

**B. ECOM Net Procedures - continued;**

**6. RESPONSIBILITIES OF MARS MEMBERS DURING AN ECOM NET – continued**

**3B609** Maintain a log of messages and actions taken, and retain this log as specified.

**3B610** Do not discuss information gained from the circuits,

**C. Terminating ECOM Operations**

**3C101** When the emergency condition has ended, the net should be secured. The NECOS on duty at the time of termination of the emergency shall make an announcement such as: "All stations this emergency (exercise <exercise name>, etc) net, this is NNNOxxx, Net Control Station. This net is secured. Out; OR "ALL STATIONS THIS NET, This IS NNNOxxx, NET CONTROL STATION, TERMINATING THE ECOM AT (EMERGENCY LOCATION) AND SECURING THE 4xxx NET AT (TIME) Z. This NET IS SECURED, OUT." The NECOS shall compose and communicate a final consolidated SITREPS for NAV4.

**3C102** Upon Termination of the Minnesota Emergency Net, the State Director (NNNOGAZ), or directed representative (NECOS, etc.), shall report to the MARS hierarchy the termination of the ECOM event.

The termination message format for an ACTUAL emergency net can be found in **Annex E, page 8**.

The termination message format for an EXERCISE emergency net can be found in **Annex E, page 9**.

**3C103** Essentially, five (5) elements make up a properly communicated event (actual or exercise).

- A. The initial Implementation Message;
- B. SITREPS;
- C. At least one EEI;
- D. A Termination Message
- E. After Action Report (AAR). Fulfillment of the AAR is State Director's (NNNOGAZ) responsibility.

Worksheets for SITREPS and EEI messages can be found in Annex E of this emergency plan.

**NAVMARCORMARS CENTRAL AREA  
REGION FIVE  
MINNESOTA AREA  
EMERGENCY COMMUNICATIONS PLAN**

**4. Special Operations**

**4-101** In some emergency situations, certain special operations may be required to meet the circumstances imposed by the emergency, and to successfully complete the tasks of the mission assigned. During an emergency, message traffic increases and requires expedient handling.

**4-102** The Captain of a SAT or ART is defined as follows -

- A. NNN0GAZ TWO if on site for the special operation will assume the role of Captain of the SAT or ART;
- B. If any other area staff member, other than NNN0GAZ TWO is on site for the special operation, he/she shall be designated as the Captain of the SAT or ART;
- C. In the event no area staff member is on site for the special operation, NNN0GAZ TWO (or ranking staff member active on the ECOM NET in the absence of NNN0GAZ TWO) shall designate a station as the Captain of the SAT or ART taking into consideration the following criteria: senior MARS member present on scene or active on the ECOM NET and making sure this person is not already assigned a duty (ALT NECOS, LIASON station, etc.)

**4-103** Two such special operations have been identified in NTP8. Prior to the dispatch of a SAT or an ART, as applicable, the following shall be documented and relayed to the SAT/ART Captain for maximum effectiveness.

- A. Name of disaster organization requesting communications, the type of communication services required, and the estimated time these services will be needed.
- B. Name, title, and phone number of requester.
- C. Location of where the SAT/ART is to be deployed; city and street address, name of airport, park, etc. Travel instructions, as roads may be closed.
- D. Name of individual(s), title(s), phone number(s), and location of these individual(s) (be exact as possible) to which the SAT/ART Captain is to contact upon arrival at site for logistical coordination.

**A. Station Augmentation Teams (SAT)**

**4A101** During an emergency, message traffic increases and requires expedient handling. Operations at some stations, particularly those, who send, relay, and/or deliver traffic, may be continuous during the emergency. With this in mind, the Station Augmentation Team (SAT) was conceived. Operations are normally extended to a 24-hour operation. Therefore, multi-operator stations provide an effective means for emergency communication operations. SATs shall be established within the Minnesota Area subject to the following:

**4A102** A SAT member must be proficient in all aspects of traffic handling, and all modes of transmission/reception. Accordingly, a Member In Training may not be appointed to a SAT. SAT members must provide for their personal needs for at least 24 hours;

**NAVMARCORMARS CENTRAL AREA  
REGION FIVE  
MINNESOTA AREA  
EMERGENCY COMMUNICATIONS PLAN**

**4. Special Operations - continued**

**A. Station Augmentation Teams (SAT) - continued**

**4A103** SATs shall be comprised of two or more members and a host station. A host station shall be operated/owned by a member who allows the SAT to operate at his/her station. NNNOGAZ and NNNOGAZ TWO shall select SATs;

**4A105** A host station must be capable of sending and receiving emergency traffic on all Region Five emergency frequencies, and all designated Minnesota Area emergency frequencies (HF & VHF); be equipped for emergency power; and, provide for access to said station, as well as providing for food, water, shelter, and sanitary facilities for members during extended operations;

**4A106** When directed, a SAT shall establish emergency communications in accordance with this Plan. It shall utilize the station call sign of the Host station. It shall prepare and file reports as required;

**4A107** In conjunction with its duties, a primary role of each SAT shall be to support any deployed ART;

**4A108** SATs may be authorized by NNNOASG or any Minnesota ECOM Staff Officer. NNNOGAZ TWO however shall have the primary responsibility for activation of Teams.

**4A109** A request from a Commanding General/Commanding Officer, or Officer In Charge, of a command/activity sponsoring a military auspices MARS Radio Station requesting the establishment of a SAT to support their station shall be transmitted to NNNOASG IL, NNNOAS5 MI, NNNOGAZ TWO and NNNOGAZ. Such message shall have an immediate precedence.

**4A110** The current assignment list of SAT team members is found in Annex B.

**B. Auxiliary Radio Teams (ART)**

**4B101 Auxiliary Radio Team criteria** Minnesota is in the process of acquiring the necessary resources required for an effective ART. All Minnesota Members are encouraged to endeavor to acquire the suitable equipment, which will comply with the requirements of this activity. The following criteria shall apply for the establishment of an ART.

**4B102** Auxiliary Radio Teams (ARTs) are mobile units that may be dispatched to a scene or disaster area for communication support. The Team Captain is responsible for equipment preparation, maintenance, and efficient fielding of the team when dispatched.

**4B103** During an emergency, mobility and adequate facilities sufficiently manned are paramount for an effective emergency communication system. In this regard, an ART that may be dispatched to the scene or area of a disaster, or for support in Navy disaster control, will provide important, timely, and first hand information concerning the status of an emergency situation or disaster.

**NAVMARCORMARS CENTRAL AREA  
REGION FIVE  
MINNESOTA AREA  
EMERGENCY COMMUNICATIONS PLAN**

**4. Special Operations - continued**  
**B. Auxiliary Radio Teams (ART) - continued**

**4B104** The team should be equipped with the following:

- A. Portable handheld and/or mobile VHF FM radio gear operable on MARS frequencies. Consideration should be given to providing extra battery packs, AC/DC chargers, and battery eliminators for handheld gear.
- B. HF radio gear for SSB operation on MARS frequencies. Facility for RTTY/AMTOR/PACKET AND PACTOR operation using portable laptop computers and terminal units is encouraged.
- C. Emergency power system sufficient to operate the HF and VHF base station and any ancillary equipment (i.e. lights, battery chargers, computers, etc.).
- D. Shelter or tent to house members' and station equipment.
- E. Antenna systems for HF and VHF base station.
- F. Message forms, logbooks, and writing materials.
- G. Food and drink.
- H. Other supplies as needed for self-support (e.g. blankets, personal hygiene items). Also reference this MN ECOM Plan Section 2-105; Preparedness.

**4B105** Team members are encouraged to get together, setup, and test their ART equipment to ensure everything is operating as expected. Check into a Minnesota NAVMARCORMARS net and run some drill traffic. Individual stations, not necessarily in an ART, who have the capability, are also encouraged to checkout their emergency systems.

**4B106** ARTs as authorized in accordance with (IAW) NTP 8 may be established within the Minnesota Area subject to the following:

- A. ARTs shall be comprised of a team of six members (if possible), one who shall be the team captain, see 4B102 for team captain assignment determination. ARTs shall be selected by NNNOGAZ and NNNOGAZ TWO;
- B. The equipment capability of each ART must comply with NTP8. Accordingly, each ART must file a team equipment capability report with NNNOGAZ TWO quarterly, in addition to complying with CASREP/CASCOR reporting requirements
- C. When directed, an ART shall establish emergency communication in accordance with this Plan; it shall utilize the station call sign assigned by Chief, MARS; it shall prepare and file reports as required.
- D. In addition to the above, an ART must be capable of sending and receiving emergency traffic on all Region Five emergency frequencies, and all designated Minnesota Area emergency frequencies (HF & VHF);
- E. An ART member must be proficient in all aspects of traffic handling, and all modes of transmission/reception. Accordingly, a Member-in-Training (Tango) may not be appointed to an ART. ART members must provide for their personal needs for at least 24 hours;

**NAVMARCORMARS CENTRAL AREA  
REGION FIVE  
MINNESOTA AREA  
EMERGENCY COMMUNICATIONS PLAN**

**4. Special Operations - continued**

**B. Auxiliary Radio Teams (ART) - continued**

F. The stations authorized to activate ARTs are NNNOASG, and/or any Minnesota ECOM Staff Officer. NNNOGAZ TWO however shall have the primary responsibility for activation of Teams.

**C. NCS/National Security Emergency Preparedness/S.H.A.R.E.S.**

**4C101** Currently, there are no Minnesota Area NAVMARCORMARS stations that are members of SHARES. When appropriate, emergency information, which may concern a Federal or Military agency, should be passed to a SHARES station for relay to the appropriate agency (ies) on the agency's (ies) emergency frequency (ies).

**NAVMARCORMARS CENTRAL AREA  
REGION FIVE  
MINNESOTA AREA  
EMERGENCY COMMUNICATIONS PLAN  
ANNEX A. Minnesota Member Call-Up  
<<< Restricted Distribution >>>**

**A1. Upon this procedure's execution:**

The primary responsibility for initiating the member call-up lies with NNNOGAZ and NNNOGAZ ONE. Secondary responsibility resides with the member call-up lies with NNNOGAZ TWO, NNNOGAZ THREE or the Command Duty Officer (CDO).

An ECOM Staff Officer shall have the responsibility of notifying all Minnesota Staff Assistants of an emergency condition. In addition, the ECOM Staff Officer shall notify the Minnesota NECOS of the day and the Minnesota Traffic Rep ("TREP") of the day, as well as NAV 4 of any emergency condition.

**Daily NECOS/TREP assignments**

Day	NECOS	TREP
Sunday	NNN0XYA/NNN0GAZ THREE	NNN0XEE/NNN0GAZ
Monday	NNN0XEE/NNN0GAZ	NNN0XEE/NNN0GAZ
Tuesday	NNN0KZC/NNN0GAZ ONE	NNN0KZC/NNN0GAZ ONE
Wednesday	NNN0BQH	NNN0BQH
Thursday	NNN0SXU/NNN0GAZ FOUR	NNN0SXU/NNN0GAZ FOUR
Friday	<b>VACANT</b>	NNN0OCF
Saturday	Rotating schedule in order by Sun-Fri schedule	Rotating schedule in order by Sun-Fri schedule

Thereafter, each Staff Assistant shall be responsible for contacting members via telephone. The call-up of members shall utilize any and all means of communications, including, but not limited to telephone, radio, facsimile, cable, data transfer or any other means necessary.

**A2. Telephone Call-Up**

The primary stations responsible for initial member notification are: NNNOGAZ, NNNOGAZ ONE, NNNOGAZ TWO, and NNNOGAZ THREE. Each of these stations will telephone stations assigned to them, who in turn will telephone stations assigned to their station and so on. Each station should make at least four (4) attempts, at regular intervals, to contact their designated stations. If practicable, attempts should be made until each designated station is alerted.

Each station so alerted shall be given the following information: emergency type (actual or exercise); operation name, e.g. "Dark Cloud"; designated emergency net frequency; any additional frequency (ies) to guard; and, any standing operational orders. For operational and administrative purposes, each station should log its telephone alert activity. Any station that learns of an emergency will call one of the primary stations, listed above, which in turn will begin the call-up. The first primary station to be alerted must call the other primary stations, which in turn will begin the call-up.

**A3. Radio Call-Up**

This method shall be secondary to, and not instead of, the telephone alert method, as described above, which is the primary method of alerting members. The designated Emergency Calling Frequencies specified in Annex H shall be utilized to alert members.

**NAVMARCORMARS CENTRAL AREA  
REGION FIVE  
MINNESOTA AREA  
EMERGENCY COMMUNICATIONS PLAN  
ANNEX A. Minnesota Member Call-Up  
Continued:  
<<< Restricted Distribution >>>**

**A4. Call-Up Tree**

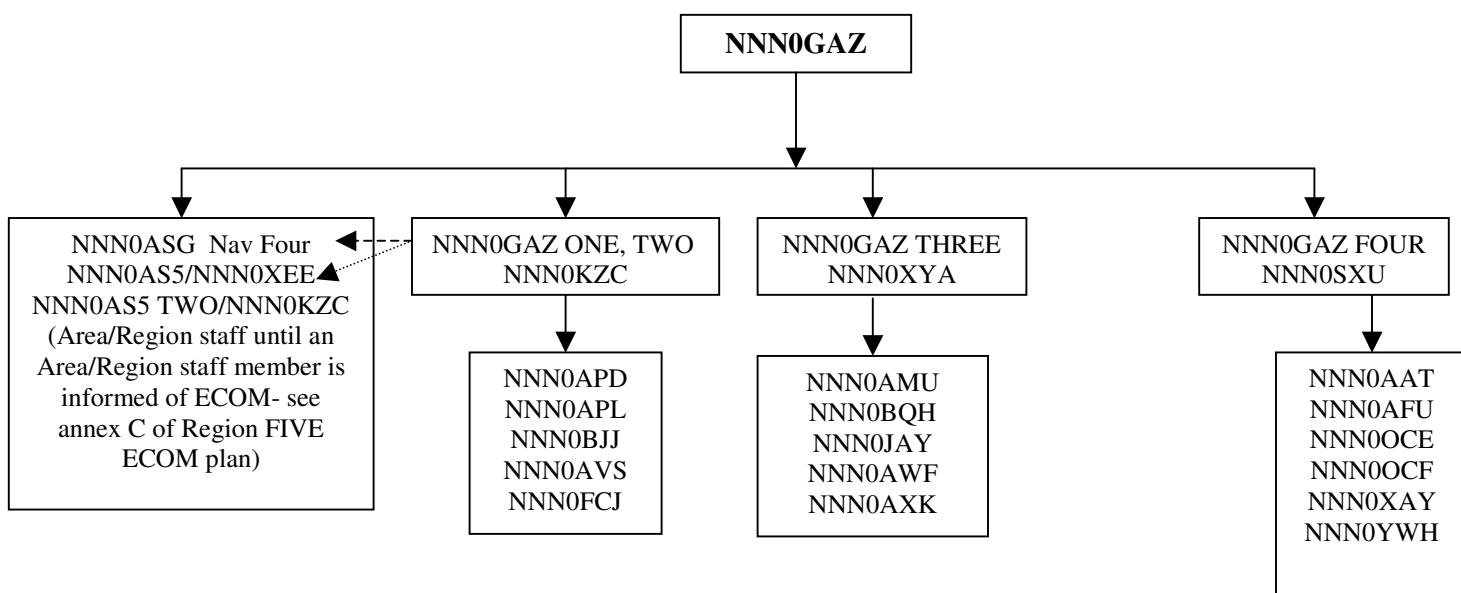
The following telephone call-up tree will be utilized in alerting Minnesota members. Each of these stations will in-turn call up the stations assigned as their responsibility. All telephone number changes or corrections must be promptly reported to NNNOGAZ and NNNOGAZ TWO.

Use of the call-up tree is required for ALL Emergencies. However, it's usage for exercises will be determined by NNNOGAZ or NNNOGAZ TWO. ANY **breakdown of the call-up tree Alert System is to be reported on the responsible members' SITREPs, Annex E page 6 for ACTUAL emergency, Annex E page 7 for EXERCISE.**

**NAVMARCORMARS CENTRAL AREA  
 REGION FIVE  
 MINNESOTA AREA  
 EMERGENCY COMMUNICATIONS PLAN  
 ANNEX A. Minnesota Member Call-Up  
 Continued:  
 <<< Restricted Distribution >>>**

**A4. Call-Up Tree - continued**

**FIRST TIER CALL-UP SUMMARY BY CALL SIGN**



- ▶ Primary caller
- .....▶ In case of GAZ absence

In the event NNN0GAZ is absent or unavailable, the next staff member in the chain of command assumes all NNN0GAZ call-up assignments and contacts all other staff members according to the diagram above.

**NAVMARCORMARS CENTRAL AREA  
REGION FIVE  
MINNESOTA AREA  
EMERGENCY COMMUNICATIONS PLAN  
ANNEX A. Minnesota Member Call-Up**

Continued:

**<<< Restricted Distribution >>>**

**A4. Call-Up Tree**

Key: (H)=Home (W)=Work (M)=Mobile (B)=Pager (F)=Fax (R)=Radio

**NNNOAS5/GAZ/XEE Tim Isom** (507) 663-0416 (H) (unpublished number)  
(507) 646-3657 (W)  
isom@stolaf.edu; nannypoo@rconnect.com

**1) NAV FOUR**

**Director-Central Area  
ITC(SW/AW) Anderson**

(847) 688-3787 (W)  
(847) 847-688-3738 (F)  
792 (DSN)  
REG4MARS@MWRGL.com

**2) NNN0AS5/GAZ/XEE Tim Isom**

(507) 663-0416

**3) NNN0AS5 ONE/GAZ ONE, TWO/KZC Al Doree**

(218) 575-2404 (H)

**4) NNN0GAZ THREE/XYA Bob Reid**

(952) 894-5178 (H)

**5) NNN0GAZ FOUR/SXU Robert King**

(952) 925-0692

(218) 326-1493 (Northern MN home)

**NNN0GAZ ONE, TWO**

**1) NNN0APD Bob Ross**

(218) 327-4443 (W) (218) 326-6223 (H)

**2) NNN0BJJ Curt Dahleen**

(218) 246-2065 (H)

**3) NNN0AVS Don Drusch**

(218) 751-6442 (H)

**4) NNN0APL Lyle Nelson**

(320) 354-2663 (H)

**5) NNN0FCJ Robert Bohner**

(320) 877-7392 (H)

**NNN0GAZ THREE**

**1) NNN0BQH Bruce Meyer**

(952) 881-2909 (H)

**2) NNN0OCF Paul Leska, Sr.**

(952) 937-4546 (W) (952) 941-4456 (H/F)

**3) NNN0AMU Fred Sauer**

(612) 456-2244 (W) (651) 437-8909 (H)

**4) NNN0JAY Cal Fuhrman**

(952) 707-9331 (H)

**5) NNN0AWF George Fisher**

(952) 884-7869 (H)

**6) NNN0AXK David Donaldson**

(952) 892-0534 (H)

**NAVMARCORMARS CENTRAL AREA  
REGION FIVE  
MINNESOTA AREA  
EMERGENCY COMMUNICATIONS PLAN  
ANNEX A. Minnesota Member Call-Up**

Continued:

**<<< Restricted Distribution >>>**

**A4. Call-Up Tree**

Key: (H)=Home (W)=Work (M)=Mobile (B)=Pager (F)=Fax (R)=Radio

**NNN0GAZ FOUR**

1) NNN0AAT Frank Karnauskas	(612) 644-9174 (W)	(952) 896-1788 (W)
3) NNN0OCF Paul Leska, Sr.	(952) 937-4546 (W)	(952) 941-4456 (H/Fax)
4) NNN0YWH Robert Olson	(952)-925-0692 (H)	
5) NNN0AFU Michael Cherney	(507) 582-3161 (H)	
6) NNN0XAY Skip Green	(715) 254-9567 (W)	(507) 452-4989 (H)
7) NNN0OCE Joel Jensen	(507) 389-2111 (W)	(507) 388-5633 (H)

**NAVMARCORMARS CENTRAL AREA  
REGION FIVE  
MINNESOTA AREA  
EMERGENCY COMMUNICATIONS PLAN  
ANNEX B. Station Augmentation Team (SAT) Operations**

**B1.** As of the revision date of this Minnesota ECOM Plan, the following stations are appointed for the core membership of the Minnesota Area SAT;

**A. Metropolitan SAT**

NNN0BQH Bruce Meyer  
9410 Blaisdell Ave  
Bloomington, MN 55420  
H: 952-881-2909

NNN0XYA Bob Reid  
13600 Princeton Circle  
Savage, MN 55378  
952-894-5178

NNN0JAY Cal Fuhrman  
12624 Sable Drive  
Burnsville, MN 55337  
H: 952-707-9331

**B. Northern Minnesota SAT**

NNN0APD Robert Ross  
5523 Sunny Beach Rd  
Grand Rapids, MN 55744  
H: 218-326-6223

NNN0KZC Al Doree  
3876 E. Shamineau Drive  
Motley, MN 56466  
H: 218-575-2404

NNN0BJJ Curtis Dahleen  
Route 1, Box 245B  
Deer River, MN  
H: 218-246-2065

**C. Southern Minnesota SAT**

NNN0XAY Skip Green  
214 E. 3<sup>rd</sup>, P.O. Box 595  
Winona, MN 55987  
H: 507-452-4989  
W: 507-254-9567

NNN0OCE Joel Jensen  
219 East Skyline Court  
Mankato, MN 56001  
507-388-5633

NNN0XEE Tim Isom  
1021 Maple Street  
Northfield, MN 55057  
H: 507-663-0416  
W: 507-646-3657

**NAVMARCORMARS CENTRAL AREA  
 REGION FIVE  
 MINNESOTA AREA  
 EMERGENCY COMMUNICATIONS PLAN  
 ANNEX C. Auxiliary Radio Team (ART) Operations**

**C1. IRT AS5 MN 031745Z JAN 2009**  
 SUBJ: REGION FIVE BCST 02-09 ART CALL SIGNS

1. The following calls are setup for each state/area. Each state/area will have a minimum of two ART teams calls for use in the MARS WL2K system. The ART Team call is assigned to the ART TEAM, not the state. ART team callsigns are only for the use of the ART Team and are not to be viewed as additional callsigns for the state. The Region Director retains the authority to issue and rescind ART Team callsigns.

2.

ART TEAM	STATE	CALLS
ART 5-1	IL	NNN0DEB
ART 5-2	IL	NNN0DOB
ART 5-3	IN	NNN0DEC
ART 5-4	IN	NNN0DOC
ART 5-5	MI	NNN0DEF
ART 5-6	MI	NNN0DOF
ART 5-7	MN	NNN0DEG
ART 5-8	MN	NNN0DOG
ART 5-9	OH	NNN0DEH
ART 5-10	OH	NNN0DOH
ART 5-13	OH	NNN0DEK
ART 5-14	OH	NNN0DOK
ART 5-15	OH	NNN0DEL
ART 5-16	OH	NNN0DOL
ART 5-11	WI	NNN0DEI
ART 5-12	WI	NNN0DOI

**NAVMARCORMARS CENTRAL AREA  
REGION FIVE  
MINNESOTA AREA  
EMERGENCY COMMUNICATIONS PLAN  
ANNEX D. ECOM Training**

- D1** Each NECOS in the Minnesota Area will share the ECOM Training responsibility with NNNOGAZ TWO and NNNOGAZ FOUR, but only to the extent as listed below:
- A. When requested by NNNOGAZ TWO, NNNOGAZ FOUR, NNNOGAZ or NNNOGAZ ONE, and only when routine traffic and time permit, the NECOS shall call an Exercise Emergency Net IAW this ECOM plan. The NECOS shall prepare the necessary ECOM worksheets as noted in this plan. Copies of the completed worksheets shall be delivered to all referenced addrees.
  - B. Each NECOS is authorized to call an Exercise Emergency Net on their own initiative, subject to all of the requirements listed in paragraph A., above.
  - C. NNNOGAZ TWO and NNNOGAZ FOUR shall continue to call Exercise Emergency Nets from time to time when they believe an exercise is warranted.
  - D. NNNOGAZ TWO shall continue to work with NNNOGAZ FOUR in the preparation and delivery of ECOM training to Minnesota Area stations.
- D2** During ECOM exercises, the digital (RDN) traffic responsibilities will be shared by those stations checked aboard the ECOM net that are digitally (PACTOR) capable. Minnesota will discontinue its previous practice of having just one assigned Primary Data Station. All hands that have digital assets must learn how to introduce traffic into the digital system.
- D3** Due to the lack of third party traffic to promote communications training, Minnesota MARS hierarchy expects each station to generate its own traffic. At least one message per month is expected to be transmitted by voice over the HF traffic net's circuit. These may be participation reports, EEI's, informal messages, etc.

**NAVMARCORMARS CENTRAL AREA  
REGION FIVE  
MINNESOTA AREA  
EMERGENCY COMMUNICATIONS PLAN  
ANNEX E. ECOM Worksheets**

**E1.** Relative to the general membership, four (4) messages shall be used in complying with reporting requirements of NTP8. They are: Essential Elements of Information (actual & exercise), Implementation Message (actual emergency); Implementation Message (exercise); and, SITREPs (used for both actual and exercise emergencies). Copies of worksheets/templates for each follow.

Page E-2 - Essential Elements of Information (EEI) - Actual Emergency

Page E-3 - Essential Elements of Information (EEI) - Exercise

Page E-4 - Implementation Message Worksheet - Actual Emergency

Page E-5 - Implementation Message Worksheet - Exercise

Page E-6 - SITREPS - Actual emergency

Page E-7 - SITREPS - Exercise

Page E-8 - Termination Message - Actual Emergency

Page E-9 - Termination Message - Exercise

Page E-10-11 - ECOMM NECOS Script

**E2. EXERCISE MESSAGE FORMAT**

Exercises should follow the format and procedures as if it were an actual emergency, except that the format of the emergency messages shall be:

**BT**  
**UNCLAS EXERCISE (name of exercise may be added)**  
**(text)**  
**EXERCISE**  
**BT**

**E3. MESSAGE FORMATS**

Message formats shown in the worksheet include the routing line and ending line (NNNN) for the convenience of stations that handle traffic. Stations transmitting their messages via voice to a traffic handling station would start their message with the precedence and date-time-group line (in most cases the third line from the top of each message example) and end with the second break (BT).

**NAVMARCORMARS CENTRAL AREA  
REGION FIVE  
MINNESOTA AREA  
EMERGENCY COMMUNICATIONS PLAN  
ANNEX E. ECOM Worksheets  
Continued**

**NAVMARCORMARS ECOM Essential Elements of Information  
ACTUAL INCIDENT  
IAW CHNAVMARCORMARS BCST 05-06**

OO NOASA NOASG (Routing line with precedence – uses “O”, not zeros in this line)  
DE NNNxxx #### (where xxx represents your station suffix, #### represents message serial number for your station)  
O (Date-Time-Group) (EEI message is always an IMMEDIATE (O) Message)  
FM NNN0xxx MN (where xxx represents your station suffix)  
TO AAN3EEI VA  
INFO NNN0ASA VA  
NNN0ASZ GA  
NNN0ASG IL  
NNN0ASG ONE MI  
NNN0ASG TWO AL  
NNN0AS5 MN  
NNN0AS5 ONE MN  
NNN0AS5 TWO MI  
NNN0GAZ MN  
NNN0GAZ ONE MN  
NNN0GAZ TWO MN

BT

UNCLAS ACTUAL INCIDENT

SUBJ: EEI REPORT

(For updates, change line to read: SUBJ: EEI REPORT UPDATE NR 1 and increase the number as appropriate.)

1. REF (use appropriate event identifier from list)/MN
  - A. (Incident and location) (What, Where and When: specific location of incident and time of occurrence)
  - B. (Status of emergency medical facilities) (Hospitals/clinics operational, destroyed, partially destroyed - what is available in the area, etc.)
  - C. (Local transportation status) (Accessibility of incident area: roads, bridges, airports, railways, etc)
  - D. (What was damaged) (Buildings, cars, facilities; number of known injured, etc)
  - E. (Area utility status) (Areas without water, electricity, etc.)
  - F. (Local communications status) (Status of local telephone; radio; television; etc. and if unaffected, limited, or unavailable)
  - G. (Source of information and when received – a date-time group)

*Notes when providing observation information – if the observation is:*

    - Personal observation – include MARS callsign;
    - From a TV or Radio station – give station callsign and location – including city and state;
    - From a scanner – provide frequency (if possible);
    - From a government/emergency official - include name, agency and complete telephone number
  - H. (Remarks/pertinent information) (If none, state NONE)

ACTUAL INCIDENT

BT

NNNN

**NAVMARCORMARS CENTRAL AREA  
REGION FIVE  
MINNESOTA AREA  
EMERGENCY COMMUNICATIONS PLAN  
ANNEX E. ECOM Worksheets**

**Continued  
NAVMARCORMARS ECOM Essential Elements of Information  
EXERCISE  
IAW CHNAVMARCORMARS BCST 05-06**

OO NOASA NOASG (Routing line with precedence – uses “O”, not zeros in this line)  
DE NNNxxx ##### (where xxx represents your station suffix, ##### represents message serial number for your station)  
O (Date-Time-Group) **(EEI message is always an IMMEDIATE (O) Message)**  
FM NNN0xxx MN (where xxx represents your station suffix)  
TO AAN3EEI VA  
INFO NNN0ASA VA  
NNN0ASZ GA  
NNN0ASG IL  
NNN0ASG ONE MI  
NNN0ASG TWO AL  
NNN0AS5 MN  
NNN0AS5 TWO MI  
NNN0GAZ MN  
NNN0GAZ ONE MN  
NNN0GAZ TWO MN  
BT  
UNCLAS MARS EXERCISE  
SUBJ: EEI REPORT  
(For updates, change line to read: SUBJ: EEI REPORT UPDATE NR 1 and increase the number as appropriate.)  
1. REF (use appropriate event identifier from list)/MN  
A. (Incident and location) (What, Where and When: specific location of incident and time of occurrence)  
B. (Status of emergency medical facilities) (Hospitals/clinics operational, destroyed, partially destroyed - what is available in the area, etc.)  
C. (Local transportation status) (Accessibility of incident area: roads, bridges, airports, railways, etc)  
D. (What was damaged) (Buildings, cars, facilities; number of known injured, etc)  
E. (Area utility status) (Areas without water, electricity, etc.)  
F. (Local communications status) (Status of local telephone; radio; television; etc. and if unaffected, limited, or unavailable)  
G. (Source of information and when received – a date-time group)  
*Notes when providing observation information – if the observation is:*  
- Personal observation – include MARS callsign;  
- From a TV or Radio station – give station callsign and location – including city and state;  
- From a scanner – provide frequency (if possible);  
- From a government/emergency official - include name, agency and complete telephone number  
H. (Remarks/pertinent information) (If none, state NONE)  
MARS EXERCISE  
BT  
NNNN

**NAVMARCORMARS CENTRAL AREA  
REGION FIVE  
MINNESOTA AREA  
EMERGENCY COMMUNICATIONS PLAN  
ANNEX E. ECOM Worksheets**

Continued

**NAVMARCORMARS ECOM Implementation Message Worksheets  
See 3B401 (actual event) and 3B402 (exercise)**

**The Actual Emergency format shall be as such,**

OO NOASA NOASG      Note: Add additional routing if additional areas are included  
DE NNN0<Traffic station> ### (Traffic station's message serial number)  
O <date-time-group>      (Implementation messages are always IMMEDIATE (O))  
FM NNN0<Your callsign> MN  
TO NNN0ASA VA  
NNN0ASZ GA  
NNN0ASG IL  
NNN0AS5 MN  
NNN0GAZ MN  
INFO NNN0ASG ONE MI  
NNN0ASG TWO AL  
NNN0AS5 ONE MN  
NNN0AS5 TWO MI  
NNN0GAZ ONE MN  
NNN0GAZ TWO MN  
NNN0AS\_ \_  
NNN0G\_ \_

*Optional:* Add additional Region Director(s) if state(s) not in region are notified for additional support.

*Optional:* Add State Director(s) if state(s) to be notified for additional support.

BT

UNCLAS

SUBJ EMERG COMM IMPLEMENTATION

1. Circumstances requiring implementation.
2. MARS services requested (yes/no). If yes, requested by name and title of the requestor.
3. Additional communication support required (yes/no). If yes, to what extent and scope.

(Note: If additional support indicated within:

- A. State - action to be taken by State director.
- B. Region - action to be taken by Director.
- C. Outside Region - action to be taken by Chief, NAVMARCORMARS.

BT

NNNN

**NAVMARCORMARS CENTRAL AREA  
REGION FIVE  
MINNESOTA AREA  
EMERGENCY COMMUNICATIONS PLAN  
ANNEX E. ECOM Worksheets  
Continued**

**NAVMARCORMARS ECOM Implementation Message Worksheets  
See 3B401 (actual event) and 3B402 (exercise)**

**The EXERCISE format shall be as such;**

OO NOASA NOASG      Note: Add additional routing if additional areas are included  
 DE NNN0<Traffic station> ### (Traffic station's message serial number)  
 O<date-time-group>      (Implementation messages are always IMMEDIATE (O))  
 FM NNN0<Your callsign> MN  
 TO NNN0ASA VA  
 NNN0ASZ GA  
 NNN0ASG IL  
 NNN0AS5 MN  
 NNN0GAZ MN  
 INFO NNN0ASG ONE MI  
 NNN0ASG TWO AL  
 NNN0AS5 ONE MN  
 NNN0AS5 TWO MI  
 NNN0GAZ ONE MN  
 NNN0GAZ TWO MN  
 NNN0AS\_ \_  
 NNN0G\_ \_

*Optional:* Add additional Region Director(s) if state(s) not in area/region are notified for additional support.

*Optional:* Add State Director(s) if state(s) to be notified for additional support.

BT  
 UNCLAS EXERCISE <exercise name>  
 SUBJ EMERG COMM IMPLEMENTATION <exercise name>  
 1. Circumstances requiring implementation.  
 2. MARS services requested (yes/no). If yes, requested by name and title of the requestor.  
 3. Additional communication support required (yes/no). If yes, to what extent and scope.  
 (Note: If additional support indicated within:  
 A. State - action to be taken by State director.  
 B. Region - action to be taken by Director.  
 C. Outside Region - action to be taken by Chief, NAVMARCORMARS.  
 EXERCISE <exercise name>  
 BT  
 NNNN

**NAVMARCORMARS CENTRAL AREA  
REGION FIVE  
MINNESOTA AREA  
EMERGENCY COMMUNICATIONS PLAN  
ANNEX E. ECOM Worksheets  
Continued;**

**SITREPS Worksheet  
On-Scene Station**

PP NOASG (Routing line with precedence)  
DE NNN<Traffic station> ### (Traffic station's message serial number)  
P <date-time-group> (SITREPS are always PRIORITY messages)

FM NNN0<Your call> MN

TO NNN0ASG IL

NNN0AS5 MN

NNN0GAZ MN

INFO NNN0ASG ONE MI

NNN0ASG TWO AL

NNN0AS5 ONE MN

NNN0AS5 TWO MI

NNN0GAZ ONE MN

NNN0GAZ TWO MN

BT

UNCLAS

SUBJ SITREP <ONE, TWO ... FINAL> <Emergency name> **OR** <Exercise Name>

1. (Brief resume of situation in disaster site)
2. (Designator(s) of Net(s) and number of stations participating in the emergency)
3. (Advisory information, recommendations, needs, etc., be brief.)
4. (Prognosis for next two hours)
5. (Other pertinent information - problems, equipment performance, etc.)

BT

NNNN

**Note:**

- Complete ALL Five paragraphs
- if information is lacking or there is no change state:  
**No Change, Negative, Not Available**

Standard categories of information 1 through 5 in the text of a SITREP will not be omitted. Lack of information or a negative report will be made by using the following terms:

- (1) **NO CHANGE** - used to indicate that the item is the same as previously reported.
- (2) **NEGATIVE** - used to indicate this category not applicable, not being used, or nothing to report.
- (3) **NOT AVAILABLE** - information requested by this category is not available at this time.

**NAVMARCORMARS CENTRAL AREA  
REGION FIVE  
MINNESOTA AREA  
EMERGENCY COMMUNICATIONS PLAN  
ANNEX E. ECOM Worksheets  
Continued;**

**SITREPS Worksheet  
State Director or state staff designee  
Due every four hours from the State Director or designee**

PP NOASG (Routing line with precedence)

DE NNN<Traffic station> ### <message number>

P <date-time-group>

FM NNN0<Your callsign> MN

TO NNN0ASG IL

NNN0AS5 MN

INFO NNN0ASG ONE MI

NNN0ASG TWO AL

NNN0AS5 ONE MN

NNN0AS5 TWO MI

NNN0GAZ MN

NNN0GAZ TWO MN

BT

UNCLAS EXERCISE <exercise name>

SUBJ SITREPS <ONE, TWO ... FINAL> <Emergency Name> **OR** <Exercise Name>

1. (Brief resume of situation in disaster state) ←
2. (Designator(s) of Net(s) and number of stations participating in the emergency)
3. (Advisory information, recommendations, needs, etc., be brief.)
4. (Prognosis for next two hours)
5. (Other pertinent information - problems, equipment performance, etc.)

EXERCISE <exercise name>

BT

NNNN

**Note:**

- Complete ALL Five paragraphs
- if information is lacking or there is no change state:  
No Change, Negative, Not Available

**Note:**

**Include only state staff that did not author report, ie if State Director authored report, eliminate as INFO addee, etc.**

This is a summation of all sitreps received from stations within the state not including the on-scene station. Give a broad overview of situation within the state.

Standard categories of information 1 through 5 in the text of a SITREP will not be omitted. Lack of information or a negative report will be made by using the following terms:

- (1) **NO CHANGE** - used to indicate that the item is the same as previously reported.
- (2) **NEGATIVE** - used to indicate this category not applicable, not being used, or nothing to report.
- (3) **NOT AVAILABLE** - information requested by this category is not available at this time.

**NAVMARCORMARS CENTRAL AREA  
REGION FIVE  
MINNESOTA AREA  
EMERGENCY COMMUNICATIONS PLAN  
ANNEX E. ECOM Worksheets  
Continued;**

**Termination Worksheet: Actual Emergency**

Note: Must be the same precedence as the implementation message, add additional routing if additional areas were included in the implementation message.

↓

OO NOASA NOASG  
DE NNN0<Traffic station callsign> ### (Traffic station's message serial number)  
O <date-time-group>  
FM NNN0xxx MN  
TO NNN0ASA VA  
NNN0ASZ GA  
NNN0ASG IL  
NNN0AS5 MN  
NNN0GAZ MN  
INFO NNN0ASG ONE MI  
NNN0ASG TWO AL  
NNN0AS5 ONE MN  
NNN0AS5 TWO MI  
NNN0GAZ ONE MN  
NNN0GAZ TWO MN  
NNN0AS\_ \_  
NNN0G\_ \_  
NNN0G\_ TWO \_  
BT  
UNCLAS  
1. THE <subject event, ACTUAL ECOM> IS TERMINATED.  
2. NORMAL COMMUNICATIONS ARE RESTORED IN MINNESOTA.  
BT  
NNNN

*Optional:* Add additional Region Director(s) if state(s) not in region are notified for additional support.

*Optional:* Add State Director(s) if state(s) to be notified for additional support.

**NAVMARCORMARS CENTRAL AREA  
REGION FIVE  
MINNESOTA AREA  
EMERGENCY COMMUNICATIONS PLAN  
ANNEX E. ECOM Worksheets  
Continued;**

**Termination Worksheet: Exercise**

Note: Must be the same precedence as the implementation message, add additional routing if additional areas were included in the implementation message.

↓

OO NOASA NOASC NOASG  
DE NNN0<Traffic station callsign> ### (Traffic station's message serial number)  
O <date-time-group>  
FM NNN0xxx MN  
TO NNN0ASA VA  
NNN0ASZ GA  
NNN0ASG IL  
NNN0AS5 MN  
NNN0GAZ MN  
INFO NNN0ASG ONE MI  
NNN0ASG TWO AL  
NNN0AS5 ONE MN  
NNN0AS5 TWO MI  
NNN0GAZ ONE MN  
NNN0GAZ TWO MN  
NNN0AS\_ \_  
NNN0G\_ \_  
NNN0G\_ TWO \_  
BT  
UNCLAS  
1. THE <subject event, EXERCISE ECOM> IS TERMINATED.  
2. <Additional relevant text>.  
3. NORMAL COMMUNICATIONS ARE RESTORED IN MINNESOTA.  
MARS EXERCISE  
BT  
NNNN

*Optional:* Add additional Region Director(s) if state(s) not in region are notified for additional support.

*Optional:* Add State Director(s) if state(s) to be notified for additional support.

**NAVMARCORMARS CENTRAL AREA  
REGION FIVE  
MINNESOTA AREA  
EMERGENCY COMMUNICATIONS PLAN  
ANNEX E. ECOM Worksheets  
Continued;**

**ECOM NET NECOS script**

**NET CALL-UP:**

All stations this **EMERGENCY NET** (*If this is an exercise net, insert the word EXERCISE and name of the exercise between the words EMERGENCY NET. Example: All stations this EMERGENCY EXERCISE ROLLING THUNDER NET*), this is (*your full MARS callsign*), net control station for the 5G5E, Fifth Region, Minnesota Navy-Marine Corps MARS EMERGENCY Net. This is a directed net. All stations tune to this frequency. Give your location when checking in. OVER.

*ACKNOWLEDGE CHECK-INS*

**ASSIGNING ALTERNATE NECOS:**

*NNN0XXX (a station that is checked in preferably with a strong signal)*, this is (*your full callsign*). You are **ALTERNATE NET CONTROL STATION**. Maintain a log duplicating mine. Remain on this frequency unless otherwise directed. OVER.

**ALTNECOS RESPONDS: "THIS IS (*their full callsign*). ROGER OUT"**

Note: You may need to make sure that the ALTNECOS has the same stations checked in as you do as primary NECOS.

**ASSIGNING LIAISON STATIONS:**

*NNN0YYY (a second station that is checked in preferably with a strong signal)*, this is (*your full callsign*). You are assigned as a liaison station. Be prepared to move to a different frequency. Remain on this frequency unless otherwise directed. OVER.

**LIAISON STATION RESPONDS: "THIS IS (*their full callsign*). ROGER OUT"**

Note: You may have more than one liaison (example - liaison to a 4th Region frequency or another 4th region area and a digital liaison to continuously check the area PACTOR switch). Assign liaison stations one at a time using the same words but indicate what they are a liaison for.

**SECOND NET CALL**

All stations this **EMERGENCY NET** (*If this is an exercise net, remember to insert the word EXERCISE and name of the exercise between the words EMERGENCY NET*), this is (*your full MARS callsign*), net control station. Stations with **EMERGENCY TRAFFIC ONLY**. Give precedence and destination of your messages. Give your location when checking-in OVER.

*ACKNOWLEDGE CHECK-INS*

**PASSING TRAFFIC**

The IMPLEMENTATION MESSAGE is **ALWAYS PASSED FIRST**. Direct the station to move to the **EMERGENCY CALLING FREQUENCY** of NNA (14385.0 kHz) or NFK (7382.5 kHz) and get this message to NNN0ASA as soon as possible.

**Note:** The implementation message may have been passed as IMMEDIATE traffic in a regular traffic net, in which case, secure the Traffic net IMMEDIATELY after the implementation message has been passed and start the EMERGENCY NET.

**NAVMARCORMARS CENTRAL AREA  
REGION FIVE  
MINNESOTA AREA  
EMERGENCY COMMUNICATIONS PLAN  
ANNEX E. ECOM Worksheets  
Continued;**

**ECOM NET NECOS script Continued:**

Passing the implementation message - you can direct your digital liaison station to take the traffic to the area, or any available switch in the region and pass the traffic. In addition, you may direct another liaison station to pass this on a region frequency.

**ADDITIONAL NET PROCEDURES:**

Once the IMPLEMENTATION MESSAGE has been passed and the rush has subsided, the net can be controlled as if it is a normal traffic net. The NECOS should have frequent net calls, direct the passing of traffic and maintain circuit discipline. When the emergency condition has ended, the net should be secured.

**SECURING THE EMERGENCY NET:**

All stations this **EMERGENCY NET** (*If this is an exercise net, remember to insert the word EXERCISE and name of the exercise between the words EMERGENCY NET*), this is (*your full MARS callsign*), net control station. This net is secured OUT.

**NECOS RESPONSIBILITIES:**

The NECOS will assign a Liaison Station.

The NECOS shall make every effort to ensure that high precedence outbound traffic is being properly passed or relayed.

Insure that at minimal, initial Situation Reports (SITREPS) are sent and that the content of such are "in compliance to the requirements specified in Annex D."

The NECOS shall also insure the Minnesota Call-up Tree procedure (actual Emergency unless otherwise directed) was activated to notify members of the emergency

Upon approval from an ECOM Staff Officer or higher authority, the NECOS may activate an Auxiliary Radio Team (ART) and/or Station Augmentation Team (SAT).

The NECOS should make Frequent Net Call-ups and shall occasionally verify propagation conditions by requesting Radio Checks.

After the net is operating or as circumstances warrant (propagation, traffic delivery, etc.,) the ALT NECOS may be directed to assume NECOS. ALT NECOS would state as follows - All stations this emergency net (exercise XXX, etc), This is NNNOxxx, assuming net control. Out.

The NECOS should not remain as Net Control for more than two (2) hours without relief.

The NECOS shall maintain proper circuit discipline and conduct DIRECTED net operations.

The NECOS shall use their Liaison station(s) to pass traffic (SITREPS, etc.) to other designated nets/frequencies

When the primary NECOS is relieved, unless otherwise directed by competent authority, at the completion of his/her watch, is responsible to make and transmit a Situation Report.

**NECOS OPTIONS:**

Authorize abbreviated call signs;

Limit the number of check-ins;

Limit check-ins to those stations that have emergency traffic or business for the net only;

Acknowledge ARTs, stations at the disaster scene, or SAT's first

**FINAL NOTES**

Not all emergencies are the same. This is a basic ECOM NET NECOS . This script should meet the needs of most EMERGENCY nets, ACTUAL or EXERCISE. As NECOS, your best judgement by customizing this basic script in order to more efficiently or effectively as the needs of ECOM.

**NAVMARCORMARS CENTRAL AREA  
REGION FIVE  
MINNESOTA AREA  
EMERGENCY COMMUNICATIONS PLAN  
ANNEX F. Essential Elements of Information Event Identifiers**

**F1. IAW CHNAVMARCORMARS BCST 04-03 031300Z MAR 03**

**EVENT**

AIR BORNE POISON GAS  
 AIR CRASH  
 BIOLOGICAL EVENT  
 BOMBING INCIDENT  
 BRIDGE DAMAGE/LOSS (MAJOR)  
 CHEMICAL SPELL  
 CIVIL UNREST/RIOT  
 DAMAGING HAIL  
 EARTHQUAKE  
 FLOOD  
 FOREST/GROUND FIRE  
 GAS LEAK/EXPLOSION (MAJOR)  
 HEAVY WINDS (OTHER THAN  
     HURRICANE OR TORNADO)  
 HURRICANE  
 ICY ROADS (ICE ON MAJOR ROADS, FREEWAYS,  
     AND INTERSTATES)  
 INTERSTATE BLOCKED/DAMAGED (MAJOR)  
 MAJOR COMMUNICATIONS LINK DOWN  
 NUCLEAR  
 OIL SPILL (WATER)  
 POWER OUTAGE (MAJOR)  
 SEARCH/RESCUE  
 SEISMIC SEA WAVE  
 SHIP WRECK/INCIDENT  
 TERRORIS THREAT  
 TORNADO  
 TRAIN WRECK/DERAILMENT  
 VOLCANO  
 WATER DAM BROKE/DAMAGED (MAJOR)  
 WINTER SNOW STORMS (MAJOR)

**IDENTIFIER**

POISON AIR  
 FALLEN STAR  
 BAD BUG  
 LOUD BANG  
 LOST SUPPORT  
 POISONED GROUND  
 BAD MAGIC  
 FALLING ICE  
 ROLLING THUNDER  
 TALL WATER  
 SCORCHED EARTH  
 HOT AIR  
  
 MIGHTY WINDS  
 HOWLING WIND  
  
 BLACK ICE  
 BLOCKED LANE  
 LOST COMM  
 NUCLEAR GRAYSTONE  
 DARK WATER  
 DARK DAY  
 SECURE HAVEN  
 TSUNAMI  
 DEEP SEA  
 HIDDEN SHADOW  
 VIOLENT TWISTER  
 BROKEN TRACKS  
 BRAZEN BRIMSTONE  
 FAST WATER  
 WHITE BLANKET

**EVENT SUPPORT IDENTIFIERS**

**EVENT**

FEMA SUPPORT  
 JCS SUPPORT  
 NCS SUPPORT  
 NDMS SUPPORT  
 NG AND RESERVE  
 SHARES SUPPORT

**IDENTIFIER**

FEDERAL RESPONSE  
 JOINT LIONS  
 TOP COVER  
 MEDICAL LINK  
 CIVIL COVER  
 COMMON FORTUNE

**NAVMARCORMARS CENTRAL AREA  
REGION FIVE  
MINNESOTA AREA  
EMERGENCY COMMUNICATIONS PLAN  
ANNEX F. Essential Elements of Information Event Identifiers**

**F2. IAW CHNAVMARCORMARS BCST 05-06 301100Z JUN 06  
IAW REGION FOUR BCST 13-01 072200Z JUN 01  
IAW MN AREA BCST 09/01 061900Z MAY 01**

Prepare your EEI for entry into the MDS and, if you have e-mail capability:

- A. Submit the EEI message by e-mail to the following addressees (all addresses in lower case):  
to: eei@dod-mars.org
- B. If your e-mail has the ability to mark the message as urgent, do so.
- C. The e-mail subject line should begin with: **ACTUAL EVENT/EEI**. Complete the e-mail subject line with the city (or county) and state where the events took place.
- D. Indicate the message has been delivered to AAN3EEI VA by other means by placing **'ZEN/'** immediately in front of 'AAN3EEI VA' in the 'to' line.
- E. Send the EEI message, as prepared above, by e-mail.
- F. Submit the EEI message into the MDS.
- G. In relaying the EEI message, if AAN3EEI VA is not ZEN'd, e-mail forwarding may be done by any station prior to entry into the MDS. After entry into the MDS, any sysop may forward the copy going to AAN3EEI VA by email. The station or sysop submitting the message by email should follow all the procedures listed above, especially placing the 'ZEN/' before 'AA3EEI VA'.

All hands are reminded of the following phrase in NTP8(D draft) Article D900:

'The MARS member should report any event he or she believes may be of interest at the national level.' In other words, events that are only local in nature should not be submitted. A traffic accident that ties up traffic during rush hour is only of local interest and not worthy of an EEI. On the other hand, a bridge collapse on an interstate or a road closure because of flood damage or land slide might be of national interest if it is part of a larger event like an earthquake, wide area flooding or terrorist act and would be worthy of submitting an EEI. As always, we rely on your discretion in making this determination.

**NOTE:** Only e-mail **ACTUAL** EEI messages. Do NOT e-mail exercise EEI messages.

**NAVMARCORMARS CENTRAL AREA  
REGION FIVE  
MINNESOTA AREA  
EMERGENCY COMMUNICATIONS PLAN  
ANNEX G Future Use**

**This page intentionally left blank**

**NAVMARCORMARS CENTRAL AREA  
REGION FIVE  
MINNESOTA AREA  
EMERGENCY COMMUNICATIONS PLAN  
ANNEX H. Voice Frequency Assignments  
<<<Restricted Distribution>>>**

- H1.** When necessary, ANY Region Five frequency may be utilized for ECOM. Use of Region Five frequencies for Exercises requires the NECOS to verify that the selected frequency is not in use. In addition, use of any frequency not specified in this Annex requires the selection and approval from within the MARS hierarchy.
- H2.** The VHF Frequencies assigned for Minnesota's NAVMARCORMARS/MARSREPSYS-MN are 148.975 (-600 offset), 148.975 (simplex). These frequencies are utilized in emergency and/or tactical scenarios when directed by NNNOGAZ, NNNOGAZ Two or the CDO.
- H3.** The HF frequencies assigned for scheduled Minnesota Net functions are (in kHz);

	<b>Frequency Designator</b>	<b>Assigned</b>	<b>Window/Dial</b>
Primary	NCE	4008.5	4007.0
Secondary	NBG	3326.5	3325.0
Tertiary	NAR	2656.0	2654.5
Additional Authorized	NCP	4625.0	4623.5

- H4.** As propagation warrants, NNNOGAZ TWO shall also guard the following frequencies or any other frequency he/she is directed by higher authority to guard.

<b>Frequency Designator</b>	<b>Assigned</b>	<b>Window/Dial</b>
NCL	4042.5	4041.0
NFK	7382.5	7381.0
NGE	7685.5	7684.0
NNA	14385.0	14383.5

- H5.** The designated Region Five HF Emergency Calling Frequencies are

<b>Frequency Designator</b>	<b>Assigned</b>	<b>Window/Dial</b>
NAC	2026.5	2025.0
NCL	4042.5	4041.0
NGE	7638.5	7684.0

- H6.** SHARES/NCS calling frequencies are

<b>Frequency Designator</b>	<b>Assigned</b>	<b>Window/Dial</b>
NCL	4042.5	4041.0
NFK	7382.5	7381.0
NNA	14385.0	14383.5

**NAVMARCORMARS CENTRAL AREA  
REGION FIVE  
MINNESOTA AREA  
EMERGENCY COMMUNICATIONS PLAN  
ANNEX H. Voice Frequency Assignments**

**H7. FEMA National Emergency Coordination Net (NECN) Frequencies**

- A. IAW CHNAVMARCORMARS BCST 07-03, 261200Z MAR 03, FEMA NECN Frequency Designators. The following designators will be used when referencing FEMA NECN frequencies over voice channels.

<b>Designator</b>	<b>Frequency (in kHz)</b>	<b>Sideband</b>
FEMA-1U	5211.0	USB
FEMA-1L	5211.0	LSB
FEMA-2U	10493.0	USB
FEMA-2L	10493.0	LSB
FEMA-3U	14567.0	USB
FEMA-3L	14567.0	LSB
FEMA-4U	13956.0	USB
FEMA-4L	13956.0	LSB

**NAVMARCORMARS CENTRAL AREA  
REGION FIVE  
MINNESOTA AREA  
EMERGENCY COMMUNICATIONS PLAN  
ANNEX I. FEMA MERS Detachment Station Callsigns  
<<< Restricted Distribution >>>**

- II. FEMA Mobile Emergency Response Support (MERS) Detachment Station Callsigns**
- A. IAW CHIEF ARMY MARS (CAM) 59-03 (MARS CALL SIGNS FOR FEMA MERS DETACHMENT STATIONS)
1. In order to facilitate increased interoperability between MARS and FEMA Mobile Emergency Response Support (MERS) Detachment Stations, the Army MARS call signs listed in paragraph three below have been issued to FEMA MERS stations to provide direct interoperability with MARS stations. The numerical digit identifies the FEMA region which coincides with Army MARS and Navy-Marine Corps Regions.
  2. The AAN prefix identifies use these FEMA stations for all three MARS service MARS stations rather than having separate service call signs for each location.
  3. The following MARS callsigns have been issued and are effective upon receipt of this message. (11 Jun 03 /S/Tim Isom NNN0GAZ MN State Director)
- A. FEMA REGION 1  
AAN1FMA, MAYNARD, MA  
AAN1FMB, MOBILE  
AAN1FMC, MOBILE
- B. FEMA REGION 3  
AANFMA, MT. WEATHER, VA
- C. FEMA REGION 4  
AAN4FMA, THOMASVILLE, GA  
AAN4FMB, MOBILE  
AAN4FMC, MOBILE  
AAN4FMD, MAYNARD, GA  
AAN4FME, MAYNARD, GA
- D. FEMA REGION 6  
AAN6FMA, DENTON, TX  
AAN6FMB, MOBILE  
AAN6FMC, MOBILE  
AAN6FMD, DENTON, TX  
AAN6FME, DENTON, TX  
AAN6FMF, DENTON, TX  
AAN6FMG, DENTON, TX
- E. FEMA, REGION 8  
AAN8FMA, DENVER, CO  
AAN8FMB, MOBILE  
AAN8FMC, MOBILE

**NAVMARCORMARS CENTRAL AREA  
REGION FIVE  
MINNESOTA AREA  
EMERGENCY COMMUNICATIONS PLAN  
ANNEX I. FEMA MERS Detachment Station Callsigns-continued  
<<< Restricted Distribution >>>**

- F. FEMA, REGION 10
  - AAN0FMA, BROTHELL, WA
  - AAN0FMB, MOBILE
  - AAN0FMC, MOBILE
  - AAN0FMD, BROTHELL, WA
  - AAN0FME, BROTHELL, WA

**NAVMARCORMARS CENTRAL AREA  
REGION FIVE  
MINNESOTA AREA  
EMERGENCY COMMUNICATIONS PLAN  
ANNEX J Emergency Management Annex  
<<< Restricted Distribution >>>**

**II. Minnesota Division of Emergency Management**

The Division of Emergency Management (DEM) is the state agency that coordinates the emergency management function in the state of Minnesota. The DEM is a division of the Minnesota Department of Public Safety. The legislative authority for emergency management at the state and local government levels is found in Minnesota Statutes, Chapter 12.

The Division of Emergency Management currently employs approximately 48 full- and part-time staff, nine of whom are assigned to the three regional offices. These regional offices and their contact numbers are:

Northern Region (North East MN-2, North West MN-3)

MN Interagency Fire Center

402 Southeast 11<sup>th</sup> Street

Grand Rapids, MN 55744

Phone: (218) 327-4496

Fax: (218) 327-4527

North East Coordinator – Roy Holmes roy.holmes@state.mn.us

North West Coordinator – Mary Hilbrand mary.hilbrand@state.mn.us

Central Region (West Central MN-4, Metro MN-6)

444 Cedar Street, Suite 223

St. Paul, MN 55101-6223

Phone: (651) 215-6944

Fax: (651) 296-0459

West Central Coordinator – Glenn Elvecrog 218-549-3285 glenn.elvecrog@state.mn.us

Metro Coordinator – Gary Peterson 763-441-2896 gary.w.peterson@state.mn.us

(State Emergency Operations Center)

Phone: (651) 296-2233

Fax: (651) 296-0459

Southern Region (South East MN-1, South West MN-5)

South East Coordinator

Craig Strand craig.strand@state.mn.us

Cellphone - 612-619-6115

South West Coordinator

Amy Card amy.filipek@state.mn.us

cellphone- 651-387-1244

In addition, the Minnesota Division of Emergency Management maintains a 24 hour-a-day and 7 day-a-week answering point. The purpose of this answering point is to answer requests for state assistance and for reporting petroleum or hazardous materials spills and other serious accidents or incidents. This answering point is staffed by the Minnesota Duty Officer. The following numbers will put you in contact with the Minnesota Duty Officer:

Minnesota Only – 1-800-422-0798 Metro area and outside Minnesota - 1-651-649-5451  
Backup Number - 1-651-296-2233 Fax 1-651-296-2300

The following portions of the Minnesota Statues, Chapter 12 - Division of Emergency Management may be applicable to MARS members when their services are requested by civilian authorities.

**NAVMARCORMARS CENTRAL AREA  
REGION FIVE  
MINNESOTA AREA  
EMERGENCY COMMUNICATIONS PLAN  
ANNEX J Emergency Management Annex  
Continued  
<<< Restricted Distribution >>>**

**II. Minnesota Division of Emergency Management**  
Minnesota Statutes Chapter 12 - Division of Emergency Management

**12.02 POLICY DECLARATION.**

Subdivision 1. **Findings.** Because of the existing and increasing possibility of the occurrence of natural and other disasters of major size and destructiveness and in order to (1) ensure that preparations of this state will be adequate to deal with disasters, (2) generally protect the public peace, health, and safety, and (3) preserve the lives and property of the people of the state, the legislature finds and declares it necessary:

- (1) to create a state division of emergency management, and to require the creation of local organizations for emergency management in the political subdivisions of the state;
- (2) to confer upon the governor and upon governing bodies of the political subdivisions of the state the emergency and disaster powers provided in this chapter;
- (3) to provide for the rendering of mutual aid among the political subdivisions of the state, with other states, and with Canadian provinces and to cooperate with the federal government with respect to carrying out of emergency management functions; and
- (4) to ensure that financial assistance made available to the state of Minnesota and to eligible applicants in the state, as a result of natural or other disasters, is provided in accord with established rules and regulations.

Subd. 2. **Policy.** It is further declared to be the purpose of this chapter and the policy of the state that all emergency management functions of this state be coordinated to the maximum extent with the comparable functions of the federal government, including its various departments and agencies, of other states and localities, and of private agencies of every type, to the end that the most effective preparations and use may be made of the nation's labor supply, resources, and facilities for dealing with any disaster that may occur.

**12.34 PERSONS REQUIRED TO ASSIST.**

Subdivision 1. **Emergency powers.** When necessary to save life, property, or the environment during a national security emergency, the governor, the state director, or a member of a class of members of a state or local emergency management organization designated by the governor, may (1) require any person, except members of the federal or state military forces and officers of the state or a political subdivision, to perform services for emergency management purposes as directed by any of the persons described above, and (2) commandeer, during a national security emergency, any motor vehicle, tools, appliances, or other personal property.

**12.31 NATIONAL SECURITY OR PEACETIME EMERGENCY; DECLARATION.**

Subdivision 1. **Declaration of national security emergency.** When information from the President of the United States, the Federal Emergency Management Agency, the Department of Defense, or the National Warning System indicates the imminence of a national security emergency within the United States, which means the several states, the District of Columbia, the Commonwealth of Puerto Rico, and the Panama Canal Zone, **or** the occurrence within the state of Minnesota of a major disaster from enemy sabotage or other hostile action, the governor may, by proclamation, declare

**NAVMARCORMARS CENTRAL AREA  
REGION FIVE  
MINNESOTA AREA  
EMERGENCY COMMUNICATIONS PLAN  
ANNEX J Emergency Management Annex  
Continued  
<<< Restricted Distribution >>>**

**I1. Minnesota Division of Emergency Management**

**12.31 NATIONAL SECURITY OR PEACETIME EMERGENCY; DECLARATION.  
continued**

that a national security emergency exists in all or any part of the state. If the legislature is then in regular session, or, if it is not, if the governor concurrently with the proclamation declaring the emergency issues a call convening immediately both houses of the legislature, the governor may exercise for a period not to exceed 30 days the powers and duties conferred and imposed by sections 12.31 to 12.37. The lapse of these emergency powers does not, as regards any act occurring or committed within the 30-day period, deprive any person, political subdivision, municipal corporation, or body politic of any right to compensation or reimbursement that it may have under this chapter.

**Subd. 2. Declaration of peacetime emergency.** The governor may declare a peacetime emergency. A peacetime declaration of emergency may be declared only when an act of nature, an industrial accident, a hazardous materials accident, or a civil disturbance endangers life and property and local government resources are inadequate to handle the situation. It must not be continued for more than five days unless extended by resolution of the executive council up to 30 days. An order, or proclamation declaring, continuing, or terminating an emergency must be given prompt and general publicity and filed with the secretary of state.

**Subd. 3. Effect of declaration of peacetime emergency.** A declaration of a peacetime emergency invokes the necessary portions of the state emergency operations plan developed pursuant to section 12.2 1, subdivision 3, relating to response and recovery aspects and may authorize aid and assistance under the plan.

**I2. NCS/National Security Emergency Preparedness/S.H.A.R.E.S.**

The SHARES HF program is an initiative of National Communication System to establish a national HF radio capability using existing Federal resources to provide back-up HF radio communications in support of National Security and Emergency Preparedness (See: 47 CFR 216 et seq). This program implements Executive Order 12472 (April 3, 1984) from the President of the United States.

**I3. County & Local Emergency Management**

In Minnesota, all counties and cities are required to have an "emergency management" organization that is in accordance with the state emergency management plan and program. As part of this organization, each city and county is required to have a director, who is appointed by the mayor and/or the county board. (See Minnesota Statutes Chapter 12.25). If no appointment has been made, the mayor or the chairman of the county board assumes that role. All 87 counties in Minnesota have, as a minimum, a director appointed to perform the duties associated with emergency management. Larger cities also have an appointed emergency management director; however, in some smaller communities, the mayor has assumed these duties. County emergency management directors should encourage the cities within their counties to appoint someone as emergency management director in that city.

**NAVMARCORMARS CENTRAL AREA  
REGION FIVE  
MINNESOTA AREA  
EMERGENCY COMMUNICATIONS PLAN  
ANNEX J Emergency Management Annex  
Continued  
<<< Restricted Distribution >>>**

**13. County & Local Emergency Management - continued**

For purposes of MARS, a request for emergency communications support will most likely always come from an Emergency Management Director. Notwithstanding, any request received by a member must be routed to NNNOASG and NNNOGAZ and NNNOGAZ TWO when MARS resources are activated. NNNOGAZ and NNNOGAZ TWO are responsible for the appointment of a Command Duty Officer ("CDO") at any time they are not available to act on any such request, or where they will be unavailable to receive such request(s).

**14. American Red Cross**

The lead national organization in disaster relief founded in the late 1800s, chartered by the United States Congress in 1905, and legally mandated to provide disaster relief on all disaster operations occurring within the United States and possessions worldwide. (See: 36 USC Section I et seq and PL 93- 288) With 1,700 chapters nationally, all disaster operations are directed from the operations center in Falls Church, Virginia. Through the assistance of the Department of Defense, the Red Cross has vast communications capabilities, as well as airlift and other transportation assistance.

IAW the Aviation Disaster Family Assistance Act of 1996, the American Red Cross has been designated as the lead agency, along with the National Transportation Safety Board ("NTSB"), to respond to domestic aviation disasters.

In a MARS context, a valid request for communications support would come from a "Job Director", "Emergency Services Director", "Disaster Services Director", "Disaster Chairman", or "Chapter Chairman". In any event, any request received by a member must be routed to NNNOASG and NNNOGAZ and NNNOGAZ TWO when MARS resources are activated. NNNOGAZ and NNNOGAZ TWO are responsible for the appointment of a Command Duty Officer ("CDO") at any time they are not available to act on any such request.

**15. Federal Emergency Management Agency**

Authorized by an Act of Congress in 1974 and created in 1979 by President Jimmy Carter, FEMA is the lead agency for all emergency planning, preparedness, and operations. FEMA replaces the Civil Defense agency that was a part of the Department of Defense. FEMA coordinates with all federal and military organizations concerning emergency and disaster relief. The operations center is located at Emitsburg, Maryland.

FEMA is organized in ten (10) regions. Most of NAVMARCORMARS Region Five is located within FEMA Region Five (located in Chicago, IL). Should there be a requirement for MARS emergency communications support, it most likely would be passed laterally (via NTIA, DOD, or otherwise) and, in turn, to NNNOASG. In any event, any request received by a member must be

**NAVMARCORMARS CENTRAL AREA  
REGION FIVE  
MINNESOTA AREA  
EMERGENCY COMMUNICATIONS PLAN  
ANNEX J Emergency Management Annex  
Continued  
<<< Restricted Distribution >>>**

**15. Federal Emergency Management Agency - continued**

routed to NNNOASG and NNNOGAZ and NNNOGAZ TWO when MARS resources are activated. NNNOGAZ and NNNOGAZ TWO are responsible for the appointment of a Command Duty Officer ("CDO") at any time they are not available to act on any such request, or where they will be unavailable to receive such request(s). The telephone number for FEMA, Region V, is: (312) 408-5500. Prior to 0730 and after 1630 CST, the Chicago office is relieved by Denver, CO and all calls are re-routed accordingly. The Denver FEMA Office remains on-duty 24 hours a day.

In Minnesota, the Naval Emergency Preparedness Liaison Officer (NEPLO) is Captain Lane Littrell at 612-953-3314.

**NAVMARCORMARS CENTRAL AREA  
REGION FIVE  
MINNESOTA AREA  
EMERGENCY COMMUNICATIONS PLAN  
ANNEX K - ECOM AVAILABILITY FORM LETTER  
Minnesota Area  
UNITED STATES NAVY-MARINE CORPS  
MILITARY AFFILIATE RADIO SYSTEM**

<Date; Format MMMM DD, YYYY>

<Name>

Communications Officer  
Minnesota Department of Emergency Management  
444 Cedar Street Suite 223  
St. Paul MN 55101-6223

Dear <Salutation>,

I am writing today to inform you of local resources available to support civilian authorities during periods of an emergency or disaster. The U.S. Navy-Marine Corps **Military Affiliate Radio System (MARS)** has stations located within Minnesota. Although the primary purpose of MARS is to provide the Department of the Navy with sponsored emergency communications on a local, national and international basis as an adjunct to normal Naval Communications, these services are also available to support civilian emergency management when these emergency services are not currently being utilized by the Department of Defense.

The MARS communication system is structured with volunteer Amateur Radio Operators that have undergone training and testing sponsored by the United States Navy and Marine Corps. In addition, communication training sessions are re-enforced daily via relaying of messages for stationed service personnel and their families, administrative traffic for MARS personnel, and communications from various government agencies including FEMA. These station licensees are authorized to operate on specified military frequencies outside of normal and sometimes undisciplined amateur bands. The guarded frequencies are directed by strict procedural protocol and are monitored 24 hours a day. During an emergency or disaster, if the civilian authority's communications become congested or non-functional, an alternate means of emergency management communication assistance is available.

When a request by a law enforcement, civilian, or emergency management official is made, the MARS station is commissioned to execute an Emergency Implementation Message on their behalf. The message would be simultaneously forwarded with an immediate priority to the Chief NAVMARCORMARS in Washington D.C., the Director of MARS Region Five, the MARS Minnesota State Director as well as the MARS Minnesota Staff Assistants. Station Augmentation Teams, Auxiliary Radio Teams and/or the subsequent Emergency Net may relay messages between officials or may request emergency food; water, shelters; fuel; supplies; medical needs; assistance from the American Red Cross, Federal Emergency Management Agency, or other state or federal level support (etc.). Please note that MARS assistance may complement but not substitute for other emergency communications resources. MARS support shall be provided only until such time as it is no longer required or until normal communications are restored. MARS resources made available to law enforcement, civilian and/or emergency management officials are subject to no authority other than that of their superiors in the military chain of command.



**NAVMARCORMARS CENTRAL AREA  
REGION FIVE  
MINNESOTA AREA  
EMERGENCY COMMUNICATIONS PLAN  
ANNEX K - ECOM AVAILABILITY FORM LETTER  
Region Five  
UNITED STATES NAVY-MARINE CORPS  
MILITARY AFFILIATE RADIO SYSTEM**

**Subject; Emergency and/or Disaster Communications**

**Dear Sir or Madam,**

**Please be advised that local resources are available to support civilian authorities during periods of an emergency or disaster. The U.S. Navy Marine Corps Military Affiliate Radio System ("MARS") has stations located within the area. Although the primary purpose of MARS is to provide the Department of the Navy with sponsored emergency communications on a local, national and international basis as an adjunct to normal Naval Communications, these services are also available to support civilian emergency management when these emergency services are not currently being utilized by the Department of Defense.**

**The MARS communication system is structured with volunteer Amateur Radio Operators that have undergone government sponsored training and testing. In addition, communication-training sessions are re-enforced daily via relaying routine traffic between stationed service personnel and the families. These station licensees are authorized to operate on specified military frequencies OUTSIDE of normal and sometimes undisciplined amateur (HAM) bands. The guarded frequencies are directed by strict procedural protocol and are monitored 24 hours a day. During an emergency or disaster, if the civilian authority's communications become congested or non-functional, an alternate means of emergency management communication assistance is available.**

**When a request by a civil or disaster control official is made, the MARS station is commissioned to execute an Emergency Implementation Message on their behalf. The message would be simultaneously forwarded with an immediate priority to the Chief NAVMARCORMARS in Washington D.C., the Director of MARS Region Five, the MARS Minnesota State Director as well as the MARS Minnesota Staff Assistants. Station Augmentation Teams, Auxiliary Radio Teams and/or the subsequent Emergency Net may relay messages between officials or may request emergency food; water, shelters; fuel; supplies; medicinal needs; assistance from the American Red Cross, Federal Emergency Management Agency, or other state or federal level support (etc.).**

**Please note that MARS assistance may complement but not substitute for other emergency communications resources. MARS support shall be provided only until such time as it is no longer required or until normal communications are restored. MARS resources made available to civil and/or disaster control officials are subject to no authority other than that of their superiors in the military chain of command.**

**The improbable we do immediately, the impossible takes a few hours. For reliability, security and speed in Emergency Communications, we are the US Navy - Marine Corps Military Affiliate Radio System -- proudly serving those who serve.**

**If you have any questions or concerns, please advise.**

**YOUR NAME, ADDRESS  
AND PHONE NUMBER  
GOES HERE**

**NAVMARCORMARS DIR Region #4: NNOASG IL. Approval of this form has been noted on 122035 Z Nov 96. Preapproval audit dated 242359Z Jan 98**

**NAVMARCORMARS CENTRAL AREA  
REGION FIVE  
MINNESOTA AREA  
EMERGENCY COMMUNICATIONS PLAN  
ANNEX L - Station Capability Report Summation  
<<< RESTRICTED DISTRIBUTION >>>**

*Station Capabilities*

*February 6, 2009*

<u>MARS CALL</u>	<u>Type</u>	<u>Radio Equipment</u>	<u>Mobile</u>
<i>NNN0AAT</i>	<i>Frank</i>	<i>Bloomington, MN</i>	
	<u>HF capabilities</u>		
	Transceiver	Yaesu Mark-V FT1000MP	
	Transceiver	Yaesu FT-847	
	Transceiver	Icom IC-706 MkII G	Y
	Transceiver	Icom IC-746	
	Amp	Drake L4B	
	<u>VHF/UHF capabilities</u>		
	Dual Band	Icom IC-208	
	Dual Band	Kenwood TM-D700A	Y
	Dual Band	Kenwood TH-F6A	Y
	<u>Digital capabilities</u>		
	TNC	Timewave DSP-232-PSK	
	<u>Emergency Power</u>		
	Battery	200 Amp/Hour	
 <i>NNN0AFU</i>	 <i>Mike</i>	 <i>Adams, MN</i>	
	<i>Capabilities unknown, Station Capability Report not on file</i>		
 <i>NNN0AMU</i>	 <i>Fred</i>	 <i>Hastings, MN</i>	
	<u>HF capabilities</u>		
	Amp	FL-2100B	
	Transceiver	Icom IC 761	
	<u>VHF/UHF capabilities</u>		
	VHF	TS 700 All mode	
	<u>Digital capabilities</u>		
	TNC	DRSI DPK-2	
	TNC	0-777	

**NAVMARCORMARS CENTRAL AREA  
REGION FIVE  
MINNESOTA AREA  
EMERGENCY COMMUNICATIONS PLAN  
ANNEX L - Station Capability Report Summation  
<<< RESTRICTED DISTRIBUTION >>>**

<i>Station Capabilities</i>		<i>February 6, 2009</i>	
<u>MARS CALL</u>	<u>Type</u>	<u>Radio Equipment</u>	<u>Mobile</u>
<i>NNN0APD</i>	<i>Bob</i>	<i>Grand Rapids, MN</i>	
	<u>HF capabilities</u>		
	Transceiver	Kenwood TS-440S/AT	
	<u>VHF/UHF capabilities</u>		
	VHF	Kenwood TR 7950	Y
	<u>Digital capabilities</u>		
	TNC	Kantronics KPC-3 (VHF)	
	<u>Emergency Power</u>		
	Battery	600 aH	
 <i>NNN0APL</i>	 <i>Lyle</i>	 <i>New London, MN</i>	
		<i>Capabilities unknown, Station Capability Report not on file</i>	
 <i>NNN0AVS</i>	 <i>Don</i>	 <i>Bemidji, MN</i>	
		<i>Capabilities unknown, Station Capability Report not on file</i>	
 <i>NNN0AWF</i>	 <i>George</i>	 <i>Bloomington, MN</i>	
		<i>Capabilities unknown, Station Capability Report not on file</i>	
 <i>NNN0AXK</i>	 <i>David</i>	 <i>Burnsville, MN</i>	
		<i>Capabilities unknown, Station Capability Report not on file</i>	
 <i>NNN0BJJ</i>	 <i>Curt</i>	 <i>Deer River, MN</i>	
	<u>HF capabilities</u>		
	Transceiver	Yaesu FT 757 GX ( <i>Inoperative CASREP 160045Z NOV 00</i> )	
	Transceiver	Icom IC 756	
	<u>VHF/UHF capabilities</u>		
	VHF	Icom IC2AT	Y
	VHF	Kenwood TM-261A	Y
	<u>Emergency Power</u>		
	Generator	7 kW Fuel - Gasoline	
	Battery	100 aH	

**NAVMARCORMARS CENTRAL AREA  
REGION FIVE  
MINNESOTA AREA  
EMERGENCY COMMUNICATIONS PLAN  
ANNEX L - Station Capability Report Summation  
<<< RESTRICTED DISTRIBUTION >>>**

<i>Station Capabilities</i>		<i>February 6, 2009</i>	
<u>MARS CALL</u>	<u>Type</u>	<u>Radio Equipment</u>	<u>Mobile</u>
<i>NNN0BQH</i>	<i>Bruce</i>	<i>Bloomington, MN</i>	
	<u>HF capabilities</u>		
	Transceiver	Icom 745	
	Transceiver	Icom 720A	
	<u>VHF/UHF capabilities</u>		
	VHF	Icom 228A	Y
	VHF	Icom 28A	Y
	UHF	Radio Shack HTX 404	
	VHF	Yaesu 208R HT	Y
	Dual Band	Yaesu FT 51R	Y
	<u>Digital capabilities</u>		
	TNC	PK232MBX w/Pakratt II	
	<u>Emergency Power</u>		
	Battery	135 aH	
	Generator	2 kW Fuel - Gasoline	
<i>NNN0FCJ</i>	<i>Robert</i>	<i>Cosmos, MN</i>	
	<i>Capabilities unknown, Station Capability Report not on file</i>		
<i>NNN0JAY</i>	<i>Cal</i>	<i>Burnsville, MN</i>	
	<u>HF capabilities</u>		
	Transceiver	Yaesu FT 1000MP	
	Transceiver	Ten Tec Triton	
	<u>VHF/UHF capabilities</u>		
	Dual Band	Yaesu FT 530	
	<u>Digital capabilities</u>		
	TNC	Kam +	

**NAVMARCORMARS CENTRAL AREA  
REGION FIVE  
MINNESOTA AREA  
EMERGENCY COMMUNICATIONS PLAN  
ANNEX L - Station Capability Report Summation  
<<< RESTRICTED DISTRIBUTION >>>**

<i>Station Capabilities</i>		<i>February 6, 2009</i>	
<u>MARS CALL</u>	<u>Type</u>	<u>Radio Equipment</u>	<u>Mobile</u>
<i>NNN0KWS</i>	<i>Bill</i>	<i>Willmar, MN</i>	
	<u>HF capabilities</u>		
	Amp	Homebrew 2-4-400As	
	Transceiver	Drake TR 7	
	Transceiver	Icom 765	
<i>NNN0KZC</i>	<i>Al</i>	<i>Motley, MN</i>	
	<u>HF capabilities</u>		
	Amp	SB 220	
	Receiver	Drake R4C	
	Transceiver	Collins KWM-2	
	Transceiver	Icom IC 730	
	Transceiver	Icom IC 761	
	Transmitter	Drake T4XC	
	<u>VHF/UHF capabilities</u>		
	Dual Band	Icom 29H	Y
	Dual Band	Kenwood	
	Amp	Mirage	
	<u>Digital capabilities</u>		
	TNC	Kam All mode w/Hostmaster II+	
	TNC	KPC3 w/Hostmaster II+	
	<u>Emergency Power</u>		
	Generator	4 kW Fuel – Gasoline	
<i>NNN0OCE</i>	<i>Joel</i>	<i>Mankato, MN</i>	
	<u>HF capabilities</u>		
	Transceiver	Yaesu FT1000MP	
	Transceiver	Ten Tec Scout	
	<u>VHF/UHF capabilities</u>		
	VHF	Kenwood TR 7625	Y
	Dual Band	Yaesu FT 211	Y
	<u>Digital capabilities</u>		
	TNC	PK232MBX	

**NAVMARCORMARS CENTRAL AREA  
REGION FIVE  
MINNESOTA AREA  
EMERGENCY COMMUNICATIONS PLAN  
ANNEX L - Station Capability Report Summation  
<<< RESTRICTED DISTRIBUTION >>>**

<i>Station Capabilities</i>		<i>February 6, 2009</i>	
<u>MARS CALL</u>	<u>Type</u>	<u>Radio Equipment</u>	<u>Mobile</u>
<i>NNN0OCF</i>	<i>Paul</i>	<i>Chanhassen, MN</i>	
	<u>HF capabilities</u>		
	Amp	Collins 30L-1	
	Amp	Ameritron AL1200	
	Receiver	Collins 75S3B	
	Transceiver	Yaesu FT1000MP Mark V	
	Transceiver	Icom 706 MKII G	Y
	Transceiver	Collins KWM2-A w/CP-1 3-30 MHz Crystal pack	
	Transmitter	Collins 32S3	
	<u>VHF/UHF capabilities</u>		
	Amp	Mirage 35 W VHF	
	Dual Band	Yaesu FT 8100	Y
	Dual Band	Yaesu VX-5	Y
	<u>Digital capabilities</u>		
	TNC	Kantronic Kam+ All mode	
	<u>Emergency Power</u>		
	Battery	950 aH	
<i>NNN0SXU</i>	<i>Bob Hopkins, MN/Cohasset, MN</i>		
	<u>HF capabilities</u>		
	Amp 400 Watt	3-15 MHz	
	Amp 700 Watt	3-15 MHz	
	Receiver	Collins 75S3	
	Transceiver	Icom 746 Pro	
	Transceiver	Icom 735	
	Transmitter	Collins 32S1	
	<u>VHF/UHF capabilities</u>		
	VHF	Kenwood TR 7950	
	VHF all mode	Icom 746 Pro	
	Dual Band	Yaesu VX-1R	Y
	<u>Digital capabilities</u>		
	Kam+ w/PacTerm 98 software		
	<u>Emergency Power</u>		
	Battery	70 aH	

**NAVMARCORMARS CENTRAL AREA  
REGION FIVE  
MINNESOTA AREA  
EMERGENCY COMMUNICATIONS PLAN  
ANNEX L - Station Capability Report Summation  
<<< RESTRICTED DISTRIBUTION >>>**

<i>Station Capabilities</i>		<i>February 6, 2009</i>	
<u>MARS CALL</u>	<u>Type</u>	<u>Radio Equipment</u>	<u>Mobile</u>
<i>NNN0VEU</i>	<i>Neil</i>	<i>Maple Grove, MN</i>	
	<u>HF capabilities</u>		
	Transceiver	Icom IC 745	
	<u>VHF/UHF capabilities</u>		
	VHF	Kenwood 7930	
<i>NNN0XAY</i>	<i>Skip</i>	<i>Winona, MN</i>	
	<u>HF capabilities</u>		
	Amp	Metron	
	Transceiver	Icom IC 706 MK II	
	Transceiver	FT1000MP	
	Tuner	SGC Tuner	
	<u>VHF/UHF capabilities</u>		
	UHF	100 W	
	VHF	80 W	
	VHF	IC 706 (6 mtr/2 mtr)	Y
	UHF	IC 970	Y
	Dual Band	Kenwood 741A	Y
	<u>Emergency Power</u>		
	Battery		
	Generator	300 W Fuel - Gasoline	

**NAVMARCORMARS CENTRAL AREA  
 REGION FIVE  
 MINNESOTA AREA  
 EMERGENCY COMMUNICATIONS PLAN  
 ANNEX L - Station Capability Report Summation  
 <<< RESTRICTED DISTRIBUTION >>>**

<i>Station Capabilities</i>		<i>February 6, 2009</i>	
<u>MARS CALL</u>	<u>Type</u>	<u>Radio Equipment</u>	
<i>NNN0XEE</i>	<i>Tim</i>	<i>Northfield, MN</i>	
	<u>HF capabilities</u>		
	Transceiver	Ten Tec Delta 580	
	Transceiver	Ten Tec Paragon	
	Tuner	MFJ 389	
	VFO	Ten Tec Delta 580 Remote	
	<u>VHF/UHF capabilities</u>		
	VHF	Icom IC22U w/CES simplex autopatch	
	Dual Band	Icom 207 (2)	Y
	Dual Band	Icom W32A	Y
	VHF	Kenwood TR7600	Y
	VHF	Yaesu FT 2400	Y
	<u>Digital capabilities</u>		
	TNC	PK232MBX w/PK Term 99	
	<u>Emergency Power</u>		
	Battery	10 aH	
	Generator	5.5 kW Fuel – Gasoline	
<i>NNN0XYA</i>	<i>Bob</i>	<i>Savage, MN</i>	
	<u>HF capabilities</u>		
	Transceiver	Icom IC751	
	<u>VHF/UHF capabilities</u>		
	VHF	TH 215A	Y
	Dual Band	TM 733	Y
	<u>Digital capabilities</u>		
	TNC	PK232MBX w/PK Term 99	
	<u>Emergency Power</u>		
	Battery		
<i>NNN0YWH</i>	<i>Robert</i>	<i>Minneapolis, MN</i>	
	<u>HF capabilities</u>		
	Amp	Collins 30 L1	
	Transceiver	Ten Tec Paragon	
	Transceiver	Icom IC 730	
	<u>VHF/UHF capabilities</u>		
	VHF	Ten Tec 2 mtr	Y
	<u>Digital capabilities</u>		
	TNC	Kantronics Kam	

**NAVMARCORMARS CENTRAL AREA  
REGION FIVE  
MINNESOTA AREA  
EMERGENCY COMMUNICATIONS PLAN  
ANNEX L - Station Capability Report Summation  
<<< RESTRICTED DISTRIBUTION >>>**

*Station Capabilities*

*February 6, 2009*

MARS CALL      *Type*

Radio Equipment